

# FORD TRANSIT COURIER



Go Further





Visionary. Ingenious. Remarkable.  
Every vehicle bears his signature.

*Henry Ford*







## Give your business the efficiency it deserves.

Introducing the sensational all-new Ford Transit Courier. Efficient, nippy and easy to drive, it combines outstanding CO<sub>2</sub> emissions and fuel economy with low running costs. Offering a choice between the award-winning EcoBoost petrol engine and the refined Duratorq TDCi diesels, Transit Courier is an attractive proposition for your business.

And it's not just on the operating costs where Transit Courier excels. Its compact dimensions let you negotiate city streets with ease, but gives you an exceptional loadspace of up to 2.4 cu.m\* and a 660 kg maximum payload gives you the confidence to handle larger jobs too.

1.6 Duratorq TDCi 95 PS diesel engine

97 g/km\*\* CO<sub>2</sub>

76.3 mpg\*\*



\*Measured in cubic metres in accordance with ISO 3832 and VDA methodology with folding mesh bulkhead. \*\*Ford test figures (combined cycle) with Auto-Start-Stop system and 62 mph Speed Limiter. See page 25 for fuel economy figures





# Everything you need to make your job easier.

Transit Courier is hugely accommodating – and not just for your cargo. In the cab you'll find comfortable seats, a fully-adjustable steering column and electrically-operated front windows<sup>2</sup>. Plus a host of thoughtful features to help make your working day easier.

## Features include

- Device Dock<sup>1</sup>, designed to store, mount and charge mobile devices, including smartphones and satnavs<sup>4</sup>
- DAB Radio<sup>1</sup> allows you to stream your music through the vehicle's speakers via Bluetooth® or using a USB cable
- Deep centre console, capable of storing A4 documents and small laptops
- Overhead stowage shelf<sup>2</sup>
- Reverse gear-activated rear-view camera<sup>3</sup>
- Stowage drawer under the driver's seat<sup>2</sup>

<sup>1</sup>Standard on Base series.

<sup>2</sup>Standard on Trend series.

<sup>3</sup>Option on Trend series.

<sup>4</sup>Device dimension limits apply

**Note** The Bluetooth® trademark and logos are owned by the Bluetooth SIG, Inc. and any use of such marks by Ford Motor Company Limited and its associated companies is under licence. Other trademarks and trade names are those of their respective owners.



# Loaded with smart ideas.

Transit Courier's 1620 mm load floor length offers plenty of room for cargo, toolboxes or equipment, while a folding mesh bulkhead with fold-and-dive passenger seat (option) lets you carry pipes, tubes or similar items up to 2.6 metres\*\* in length. Sidewall-mounted tie-downs (standard) keep the load floor free from obstructions, and an LED load compartment light (option on Van, not available on Kombi) helps loading and unloading after dark.





## Generous space, easy access.

With up to 2.4 cu.m\* of transport capacity and a payload of between 560 and 660 kg, Transit Courier makes light work of almost any job. With the standard bulkhead fitted in the vehicle, the sliding side door opens to reveal an outstanding 453 mm aperture, allowing loads to be put in with ease.



## Clever thinking.

To make the most of its generous space, twin asymmetric rear cargo doors with an opening angle of up to 158 degrees are standard and allow unrestricted access to the load compartment. Side-mounted tie-downs help to keep the floor clear and make it easy to clean after the work is done.





# Transit Courier Kombi. More than just a people carrier.

Need to carry people as well as cargo? Then look no further than the versatile Transit Courier Kombi. With comfortable seating for up to five, it's easy to transport a crew and their tools or equipment. Once on site, fold the rear seats flat and you have a spacious and capable van, ready for even the toughest day's work.



Transit Courier Kombi's spacious interior means plenty of room for up to five occupants, as well as bags and equipment. When the split-fold rear seats are folded and tumbled forward, you have a huge 1.7 cu.m\* of hardworking space at your disposal.



\*Measured in cubic metres in accordance with ISO 3832 and VDA methodology.





## A van that's built to last.

Designed and tested to Ford's stringent vehicle testing and durability standards, Transit Courier delivers reliable van toughness in a compact package.

### Features include

- Rigorous Ford testing programme, designed to simulate years of extreme use
- Tough, high-strength steel bodyshell
- Safety features including driver's airbag, passenger's airbag (option), Electronic Stability Control (ESC), Hill Start Assist, Traction Control System, Roll-Over Mitigation, Electronic Brake Assist, Emergency Brake Warning and Trailer Sway Control
- Extended 20,000 miles/1-year service intervals for lower maintenance costs
- Multi-piece rear bumper assembly helps to keep repair costs low
- 12-year perforation warranty

Note Front seat side airbags are available as options. Kombi models come with standard side, front, curtain and thorax airbags. A knee protector airbag is also available as an option on Kombi models and is part of the lower fascia panel.



# Transit Courier series



## Base

### Key exterior features

- 15" steel wheels with centre caps
- Day running lights
- Ford Easy-Fuel capless refuelling system
- Remote controlled central locking
- Asymmetric rear doors
- Full sized spare wheel
- Immobiliser
- Electronic Stability Control (ESC)

### Key interior features

- Rake and Reach adjustable steering column
- 4-way adjustable driver's seat
- Device Dock (Mobile Device not included)
- DAB Radio with Bluetooth® and USB connectivity
- Fixed moulded bulkhead
- Deep centre console with two cup holders and A4 document stowage
- Driver's airbag
- Manual front windows
- Lidded glove box
- Load compartment lighting

**Note: A rear-facing child seat should never be placed in the front passenger seat when the Ford vehicle is equipped with an operational front passenger's airbag.**

## Trend

### Exterior features in addition to Base

- 15" steel wheels with full wheel covers
- Front fog lights
- Body colour door mirror housings and door handles
- Single side load door
- Rain-sensing front wipers
- Automatic headlights
- Electrically-operated and heated door mirrors

### Interior features in addition to Base

- Driver's side underseat stowage drawer
- Driver's 8-way seat with adjustable lumbar support and armrest
- Overhead stowage shelf
- CD/Radio with Ford SYNC and 3.5" dot-matrix display
- Electrically-operated front windows
- Leather-trimmed steering wheel and gearshift knob
- Fuel computer
- Bright-finish door release handles
- Glovebox illumination
- Courtesy lights with front map-reading lights
- 12v auxiliary socket in load box







## Deep centre console.

Inside, Transit Courier boasts plenty of handy stowage, including the Deep centre console, which can hold A4-sized documents and smaller laptops. (Standard)

## Cruise control with Adjustable Speed Limiter.

Cruise control lets you set the pace, while the Adjustable Speed Limiter allows you to set a maximum speed to avoid inadvertently exceeding the speed limit (Option)



## Ford Easy-Fuel capless refuelling system.

A unique safeguard to ensure nobody can accidentally fill up with the wrong fuel. Plus, no dirty fuel caps to touch. (Standard)



## Ford SYNC with Applink.

Welcome to the next generation of in-vehicle connectivity. Voice-activated Ford SYNC with Emergency Assistance\* offers connectivity so advanced it lets you control entertainment, navigation and more. And can even read your text messages aloud\*\*. (Standard on Trend)



\*No subscription required.  
\*\*Text messaging feature available in selected countries. See your local Ford website for latest information.



## Device Dock.

Located just above the instrument panel, Device Dock is designed to hold your smartphone, MP3 player or navigation device within easy reach. Stream your music through the car's speakers via Bluetooth® or using a USB cable connected to the DAB Radio. The lidded compartment provides covered storage for your device and contains a charge-only USB socket. (Standard on Base only, Mobile Device not included)

**Note** The Bluetooth® trademark and logos are owned by the Bluetooth SIG, Inc. and any use of such marks by Ford Motor Company Limited and its associated companies is under licence. Other trademarks and trade names are those of their respective owners.

## Underseat stowage drawer.

A handy under passenger seat stowage drawer option on Base series, Trend series standard, is large enough to hold an A4 clipboard, tablet or a laptop computer (Standard on Trend).





## Safe and secure

Across the Ford Transit Courier range, a full line-up of passive and active safety features makes use of the latest technology to protect you, your passengers and your cargo.

1. Driver's (standard) and front passenger's airbags\* (standard on Kombi)
2. Driver's and front passenger's side impact airbags\* (option on Van, standard on Kombi)
3. Side curtain airbags (standard on Kombi)
4. Knee protector airbag (option on Kombi)
5. DIN- and ISO-compliant side-mounted tie-down points to secure cargo (standard)
6. Speed Limiter (option)
7. Electronic Stability Control and associated features (standard on all models, see right)
8. Remote central locking (standard on all models)
9. Engine immobiliser (standard on all models)
10. Perimeter or Thatcham Cat 1 alarms (options)

\*Note: A rear-facing child seat should never be placed in the front passenger seat when the Ford vehicle is equipped with an operational front passenger's airbag. The safest place for children is properly restrained on a rear seat.



## Electronic Stability Control (ESC)

### Hill Start Assist

Designed to temporarily prevent you from rolling down a slope when you move your foot from the brake pedal to the accelerator pedal. It works in forward and reverse gears, so is ideal for towing and pulling heavy loads. (Standard)

### Emergency Brake Assist

Designed to recognise an emergency braking situation and increase the pressure within the braking system to ensure maximum stopping power is used. (Standard)

### Emergency Brake Warning

Front and rear indicators automatically flash during heavy braking, giving other drivers advance hazard warning. (Standard)

### Traction Control

If wheel slip is detected at low speed, this system can distribute more torque to the wheel with most traction. (Standard)

### Roll-Over Mitigation

Designed to identify a potentially dangerous driving situation and activate the ESC to restore stability. (Standard)

### Trailer Sway Control†

When the system recognises that a towed trailer is starting to sway, it reduces engine torque and applies the brakes to lower the speed and help regain stability. †Compatible with Ford towbar



### Tyre Pressure Monitoring

Allows you to monitor tyre pressure while on the move. System alerts you if it detects that a tyre's pressure is too low, such as in the case of a puncture. (Standard on Kombi, option on Van)

## Ford SYNC with AppLink\*

The next generation of in-vehicle connectivity, **Ford SYNC with AppLink\*** lets you operate most popular MP3 players, Bluetooth\*-enabled phones, USB drives and even control apps on your smartphone with remarkably simple voice commands. Plus the Ford Emergency Assistance feature is designed to assist occupants to place an emergency call in the event of an accident – wherever you are in Europe. (Standard on Trend)

\*Compatible mobile phone required. (Ford SYNC with AppLink is available from summer 2014.) You can browse a list of AppLink-compatible apps from Ford.co.uk, or via the App Catalog available in iOS and Android stores. Ford SYNC with AppLink and Emergency Assistance are not supported by all European languages.

Note The Bluetooth\* trademark and logos are owned by the Bluetooth SIG, Inc. and any use of such marks by Ford Motor Company Limited and its associated companies is under licence. Other trademarks and trade names are those of their respective owners.



# Get the most from your new Ford

We want to help you get the most from your new Ford. And to do that, you need to know how much it is designed to safely carry, both in terms of payload and load volume. Your Transit Centre can provide professional advice on important specification aspects, and help to find the right van for your budget and business needs.

### The new Ford Transit Courier is designed to carry cargo – and lots of it.

Choosing a new van is an important decision with lots of factors to be considered. While some aspects, like selecting the most appropriate derivative, identifying the intended primary use and determining load box size are relatively simple, others, such as calculating payload are more complex.

### Payload capacity

To calculate payload, you need to know two things: the vehicle's gross vehicle mass (GVM) and its kerb mass.

**Payload = Gross vehicle mass minus kerb mass**

### Gross Vehicle Mass (GVM)

GVM is the maximum permissible weight of the vehicle when loaded and ready to go – that includes the weight of the vehicle itself, ancillaries, driver and crew (assuming the industry standard weight of 75 kg/person), fluids, fuel tank 90% full (1 litre of diesel = approximately 0.85 kg), optional and aftermarket equipment, and cargo.

### Kerb Mass

Kerb mass is the weight of a standard-specification Base series vehicle, including fluids and fuel tank 90% full, but without the driver, crew or cargo.

So to help you choose the right vehicle for your needs, here are some more detailed explanations about the factors that can influence a vehicle's payload. These include, but are not limited to:

If payload is critical to your business, or if you plan to carry cargo at, or close to, the vehicle's maximum capacity, your Transit Centre can help. Using their specialist expertise and knowledge, they can advise you on the exact specification of vehicle required to meet your individual business needs.

## Weights, Loads, Fuel Consumption

The fuel economy figures quoted in the table below are achieved by following strict EU governed test procedures and are specifically designed to enable customers to compare vehicles from all manufacturers on a like-for-like basis. Fuel consumption is directly affected by the length of the journey; number of passengers and amount of luggage carried; individual driving style; road and traffic conditions; weather conditions; vehicle age, mileage, condition and standard of maintenance; use of vehicle features such as air conditioning; and any modifications to the vehicle such as the addition of a roof rack. Your fuel economy will vary based on these and other factors and, for these reasons, many drivers may not achieve the EU fuel economy figures (below) in day-to-day driving, although the vehicle is technically capable of doing so.

		Fuel consumption in mpg (L/100 km) <sup>9</sup>										
	Euro Stage	Gross payload <sup>8</sup>	Gross vehicle mass (kg)	Kerb mass (kg)*	Front axle kerb mass (kg)	Rear axle kerb mass (kg)	Axle ratio	Max. GTM (kg) with quoted axle ratio	CO <sub>2</sub> emissions (g/km) <sup>9</sup>	Urban	Extra Urban	Combined
<b>Transit Courier</b>												
1.0 EcoBoost (100 PS (75 kW))	Stage VI	650	1765	1115	689	426	4.06	2675	120	42.2 (6.7)	61.4 (4.6)	53.3 (5.3)
1.0 EcoBoost (100 PS (75 kW)) with optional Auto Start-Stop	Stage VI	650	1765	1115	689	426	4.06	2675	115	46.3 (6.1)	61.4 (4.6)	55.4 (5.1)
1.5 Duratorq TDCi (75 PS (56 kW))	Stage V	663	1795	1132	702	430	3.37	2295	108	60.1 (4.7)	76.3 (3.7)	68.9 (4.1)
1.5 Duratorq TDCi (75 PS (56 kW)) with optional Auto Start-Stop	Stage V	663	1795	1132	702	430	3.37	2295	103	64.2 (4.4)	78.5 (3.6)	72.4 (3.9)
1.6 Duratorq TDCi (95 PS (71 kW))	Stage V	661	1795	1134	704	430	3.37	2295	105	60.1 (4.7)	78.5 (3.6)	70.6 (4.0)
1.6 Duratorq TDCi (95 PS (71 kW)) with optional Auto Start-Stop	Stage V	661	1795	1140	704	430	3.37	2295	100	64.2 (4.4)	80.7 (3.5)	74.3 (3.8)
1.6 Duratorq TDCi (95 PS (71 kW)) with optional Auto Start-Stop and 62 mph fixed speed limiter	Stage V	661	1795	1134	710	430	3.37	2295	97	64.2 (4.4)	83.1 (3.4)	76.3 (3.7)
<b>Transit Courier Kombi</b>												
1.5 Duratorq TDCi (75 PS (56 kW)) Stage 6	Stage VI	577	1780	1203	707	496	3.37	2280	104	60.1 (4.7)	78.5 (3.6)	70.6 (4.0)
1.5 Duratorq TDCi (75 PS (56 kW)) Stage 6 with optional Auto Start-Stop	Stage VI	577	1780	1203	707	496	3.37	2280	99	64.2 (4.4)	80.7 (3.5)	74.3 (3.8)

<sup>8</sup>Payload = Gross vehicle mass, less kerb mass. All kerb masses quoted in this brochure are subject to manufacturing tolerances and are for Base models with minimum equipment. Trend models will have greater kerb masses and, therefore, lower payloads due to the increased amount of standard equipment. Any additional options specified on the vehicle will reduce the payload accordingly. The declared Fuel/Energy Consumptions, CO<sub>2</sub> emissions and electric range are measured according to the technical requirements and specifications of the European Regulations (EC) 715/2007 and (EC) 692/2008 as last amended. Fuel consumption and CO<sub>2</sub> emissions are specified for a vehicle variant and not for a single car. The applied standard test procedure enables comparison between different vehicle types and different manufacturers. In addition to the fuel efficiency of a car, driving behaviour as well as other non-technical factors play a role in determining a car's fuel/energy consumption, CO<sub>2</sub> emissions and electric range. CO<sub>2</sub> is the main greenhouse gas responsible for global warming. A guide on fuel economy and CO<sub>2</sub> emissions which contain data for all new passenger car models is available at any point of sale free of charge or can be downloaded from <http://carfueldata.dft.gov.uk/>. \*Represents the lightest kerbweight assuming full fluid levels and 90% fuel levels, subject to manufacturing tolerances and options, etc., fitted. Note all engines are fitted with a standard VDPF (vapouriser Diesel Particulate Filter).



## Option packs

Option packs	Base	Trend	Kombi
Cold Climate – Heated windscreen, front fog lights, PTC heater, self-colour power adjust heated exterior mirror, power front window (Pack 1)	○	-	-
Comfort Pack – Manual air conditioning, leather-trimmed steering wheel, cruise control, and rear parking sensors (availability dependent on market)	-	○	-
Sport Pack – 15" alloy wheels, rear parking sensors, and roof rails (Pack 2)	-	○	-

● = Standard, ○ = Option, at extra cost, □ = Part of an option pack, at extra cost. \*The wheel you choose will be fitted with the tyre size noted, but no choice of tyre brand is available

## Exterior features

Exterior appearance and styling	Base	Trend	Kombi
Front bumper – Self colour	●	●	●
Rear bumper – Self colour	●	●	●
Bodyside moulding – Self colour	●	●	●
Door handles – Self colour	●	-	●
Door handles – Body colour	-	●	-
Grille – Self colour	●	●	●
Mudflaps – front and rear	○	○	○
Headlight bezel – Black	●	-	●
Headlight bezel – Bright	-	●	-
Roof rails – Bright Finish	○	○	○
<b>Exterior functional</b>			
Doors – Single side load	○	●	-
Doors – Dual side load	○	○	●
Doors – Dual side load door half glazed (2nd row opening windows)	-	-	●
Doors – Rear liftgate (glazed with wash/wipe)	○	○	○
Doors – Rear cargo	●	●	●
Rear cargo door glazing includes Heated rear screen and Rear wiper	○	○	●
Mirrors – Self colour housing, manually controlled	●	-	●
Mirrors – Self colour housing, electrically operated and heated	○	-	○
Mirrors – Body colour housing, electrically operated and heated	-	●	-
Rain sensing wipers includes automatic headlights	□	●	□
Wipers – Standard 2 speed, variable intermittent, flick/dry wipe	●	-	●
Windscreen – Heated	○	○	○
Heated rear screen	□	□	●
Parking sensors – Rear	-	○	-
Rear View Camera	-	□	-
Glass – Tinted	●	●	●
Rear window protection grille (cargo doors only)	○	○	○
Steel – 15"x6" wheel (fitted with 195/60/ tyres*)	●	●	●
Full wheel cover	-	●	-
Alloy – 15"x6" 5-spoke (fitted with 195/60 tyres*) with locking wheel nuts	-	○	-
Tyre inflator kit (instead of spare wheel)	○	○	○
Spare – Full size wheel	●	●	●
Mudflaps – Front and rear	○	○	○
<b>Exterior lighting</b>			
Headlights – Day running lights	●	●	●
Headlights – Twin chamber halogen headlights	●	●	●
Headlights – Automatic on /off	□	●	□
Headlights – Courtesy delay	●	●	●
Front fog lights	□	●	□
Centre mounted brake light	●	●	●

● = Standard, ○ = Option, at extra cost, □ = Part of an option pack, at extra cost. \*The wheel you choose will be fitted with the tyre size noted, but no choice of tyre brand is available

## Chassis features

	Base	Trend	Kombi
<b>Brakes</b>			
Brake system – Smart regenerative charging	●	●	●
Brakes – Front disc, rear drum	●	●	●
<b>Steering</b>			
Electric Power Assisted Steering (EPAS)	●	●	●
<b>Technology</b>			
Auto Start-Stop	○	○	○
Ford Eco Mode (driver information system; Part of Ford SYNC)	□	●	□
<b>Engine Governors</b>			
Speed Limiter – 56 mph (90 km/h)	○	○	○
Speed Limiter – 62 mph (100 km/h)	○	○	○
Speed Limiter – 70 mph (110 km/h)	○	○	○

● = Standard ○ = Option

## Interior features

	Base	Trend	Kombi
<b>Audio and communication systems</b>			
Audio – pre-equipment pack	○	-	○
Radio with DAB, USB, Bluetooth® with Voice Control System (2 speakers) ICE pack 15	●	-	●
Radio with SYNC/DAB/CD with 3.5" dot matrix display, USB connectivity and iPod® functionality, Ford SYNC - includes Emergency Assistance**, Bluetooth® with Voice Control System, Ecomode, automatic rain sensor and 4 speakers (4 front). ICE pack 13	○	●	○
Radio with Sat Nav, SYNC/DAB/CD with 5" TFT screen, USB connectivity and iPod® functionality, 4 speakers (front) Ford SYNC- includes Emergency Assistance**, Bluetooth® with Voice Control System, Ecomode, Manual A/C and automatic rain sensor ICE Pack 37	○	○	-
Radio with Sat Nav, SYNC/DAB/CD with 5" TFT screen, USB connectivity and iPod® functionality, 4 speakers (front) Ford SYNC- includes Emergency Assistance**, Bluetooth® with Voice Control System, Ecomode, Rear View Camera, Manual A/C and automatic rain sensor ICE Pack 59	-	○	-
Radio with Sat Nav, SYNC/DAB/CD with 5" TFT screen, USB connectivity and iPod® functionality, 4 speakers (front) Ford SYNC- includes Emergency Assistance**, Bluetooth® with Voice Control System, Ecomode, Rear View Camera, EATC with electronic recirculation facility and automatic rain sensor ICE Pack 66	-	○	-
Device Dock with USB connection.	●	-	●
<b>Carpet and Trim</b>			
Carpet – Front, with driver's side heel protection	-	-	●
Rubber Lining – Front	●	●	-
Rubber Lining – Rear cargo area	○	○	●
Floor mats – carpet	-	-	●
<b>Interior lighting</b>			
Glovebox illumination	●	●	●
Lights – Load compartment	●	●	●
Lights – Load compartment with LED	○	○	-
Lights – Battery saver (30 mins duration)	●	●	●
Courtesy lights – Front	●	-	●
Courtesy lights – Front with map reading lights	-	●	-
<b>Instruments and controls</b>			
Steering wheel – 3 spoke PU	●	-	●
Steering wheel – 3 spoke leather with radio controls	□	●	□
Fuel computer	-	●	□
Adjustable steering column – (rake and reach)	●	●	●
Screen mounted rear-view mirror (not available with solid bulkhead and with unglazed rear doors)	● /-	● /-	●
Auto dimming rear view mirror (not available with solid bulkhead and with unglazed rear doors)	□ /-	● /-	□

● = Standard, ○ = Option, at extra cost, □ = Part of an option pack, at extra cost.

The Bluetooth® trademark and logos are owned by the Bluetooth SIG, Inc. and any use of such marks by Ford Motor Company Limited is under licence. Other trademarks and trade names are those of their respective owners.

\*\*Ford Emergency Assistance operates in over 30 European countries. This feature works when paired with a compatible connected mobile phone that is with you when an airbag is deployed or the fuel pump shut off switch is activated. See your local Ford website for latest information.



## Interior features

	Base	Trend	Kombi
<b>Comfort and convenience</b>			
Door levers – Black	●	-	●
Door levers – Bright finish	-	●	-
Front passenger folding grab handle (optional on Base Van as part of overhead storage)	□	●	●
Gearshift knob – Soft feel with black insert	●	-	●
Gearshift knob – Leather	□	●	□
Locking glovebox	-	●	-
Centre console with 2 cupholders and A4 size stowage	●	●	●
Overhead stowage	○/□	●	○/□
Cruise control with Automatic Speed Limiting Device – steering wheel controls (Base requires 3-spoke leather steering wheel option at extra cost)	○	○	○
Heater – Electrical Supplementary (PTC)	○/□	○/□	●
Air conditioning – Manual control	○/□	○/□	○
Air conditioning – Electronic Automatic Temperature Control (EATC)	-	○/□	-
Recirculation heater	●	●	●
Pollen filter	●	●	●
Windows – Front manual adjust	●	-	-
Windows – Front electrically-operated with one-touch lowering on driver's side	○	●	●
Rear view camera (available with colour 5" TFT touch screen)	-	□	-
Smoker's Pack (contains ashtray and cigarette lighter)	○	○	○
<b>Loadspace compartment</b>			
No bulkhead	-	-	●
Bulkhead – Moulded Unglazed (where no side load door is fitted)	●	-	-
Bulkhead – Full Steel Unglazed (where a side load door is fitted on Base series)	●	●	-
Bulkhead – full Steel Glazed	○	○	-
Folding Mesh Bulkhead with fold-down passenger seat	□	□	-
12 V power point in loadspace	-	●	-
Cargo tie-downs (6 x DIN 75410 compliant)	●	●	-
Cargo tie-downs (4 x DIN 75410 compliant)	-	-	●
Cargo Net (only with liftgate rear door)	-	-	□
Load floor cover - Rubber (also part of folding mesh bulkhead packs)	○	○	-

## Seats

	Base	Trend	Kombi
<b>Seats and seat belts</b>			
Driver's seat – fore/aft adjustable	●	-	●
Driver's seat – fore/aft and height adjustable, with lumbar control and armrest	○	●	-
Driver's seat – Armrest	○	●	-
Passenger seat – fore/aft adjustable	●	●	●
Beltminder – Driver seat	●	●	-
Beltminder – Driver and Passenger seat	□	□	●
Fold/diver passenger seat	□	□	-
Underseat stowage (Passenger seat with standard bulkhead, driver's seat with mesh bulkhead)	□	□	-
Front seats – Heated seat back and base (available late 2015)	□	□	□
Rear seat – fold and tumble 60/40split (fixed)	-	-	●
Rear seat – Adjustable head restraints on outboard seats	-	-	●
Rear seat – Centre head restraint	-	-	○

● = Standard, ○ = Option, at extra cost, □ = Part of an option pack, at extra cost.

## Model availability

	Base	Trend	Kombi
<b>Ford Transit Courier</b>			
1.0 EcoBoost (100 PS (75 kW))	●	●	-
1.5 Duratorq TDCi (75 PS (56 kW))	●	●	●
1.6 Duratorq TDCi (95 PS (71 kW))	-	●	-

● = Standard, ○ = Option, at extra cost. **Note** all diesel engines are fitted with a standard vDPF (vaporiser Diesel Particulate Filter).

	Base	Trend	Kombi
<b>Safety and driver assistance</b>			
Anti-lock brakes – Electronic, 4-wheel <sup>1)</sup>	●	●	●
Electronic Stability Control (includes Hill Start Assist (HSA), Roll Over Mitigation (ROM), and Electronic Brake-force Distribution (EBD)) <sup>2)</sup>	●	●	●
Emergency Brake Assistance <sup>3)</sup>	●	●	●
Emergency Brake Warning <sup>3)</sup>	●	●	●
Trailer Sway Control <sup>1)</sup> (with Ford towbar)	●	●	●
Driver front airbag – single stage <sup>1)</sup>	●	●	●
Passenger front airbag – single stage <sup>1)</sup> (with passenger deactivation button)*	○	○	●
Driver and passenger side airbag <sup>1)</sup> (passenger side airbag not fitted in combination with folding mesh bulkhead)	○	○	●
Driver knee airbag <sup>1)</sup>	-	-	○
Beltminder – Driver seat	●	●	●
Beltminder – Driver and passenger seat	□	□	●
Tyre pressure monitoring <sup>1)</sup>	○	○	●
<b>Security</b>			
Central double deadlocking	●	●	●
Side-load door child locks	●	●	●
Remote central locking – 1 Lollipop Key and 1 Plain Key	●	-	●
Remote central locking – Remote Flip Key instead of plain key	○	-	○
Remote central locking – 1 Flip Key and 1 Lollipop Key	○	●	○
Perimeter alarm	○	○	○
Thatcham category 1 alarm (Not available with rear glazing on Van)	○	○	○
Engine immobiliser	●	●	●

● = Standard, ○ = Option, at extra cost, □ = Part of an option pack, at extra cost. <sup>1)</sup>Safety feature <sup>2)</sup>Driver assistance feature

\***Note: A rear-facing child seat should never be placed in the front passenger's seat when the Ford vehicle is equipped with a front passenger or side airbags.**

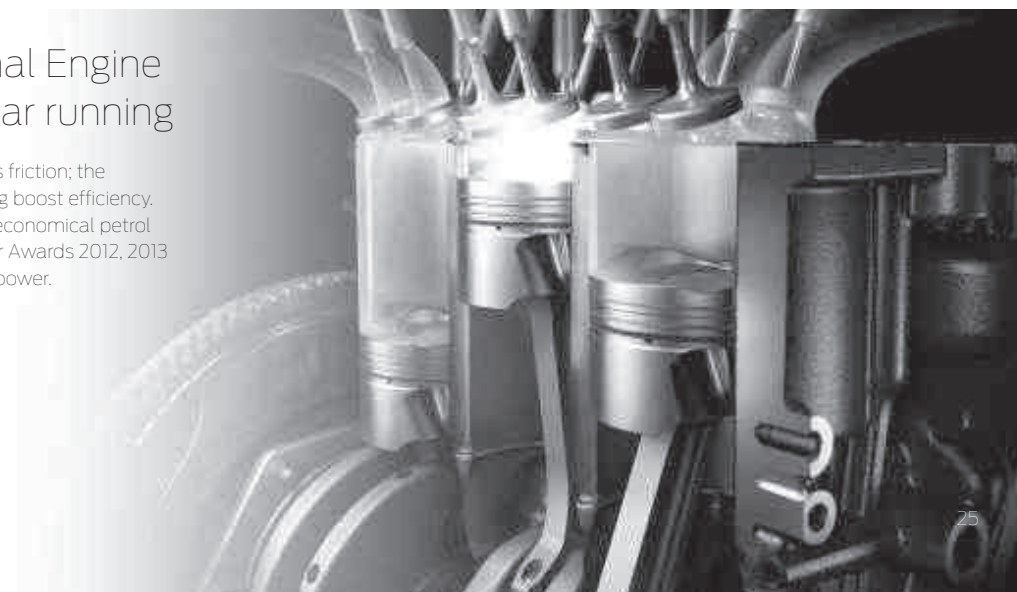
## Engine Data

	Engine technical features	Maximum power <sup>a)</sup>	Maximum torque <sup>a)</sup>
1.0 EcoBoost (100 PS (75 kW))	3 cylinders in line, DOHC, 12 valves, alloy cylinder head, direct injection with high-pressure, common rail multipoint fuel injection system, turbocharger with intercooler	100 PS	170 Nm
1.5 Duratorq TDCi (75 PS (56 kW))	4 cylinders in line, SOHC, 8 valves, aluminum cylinder block with open deck, direct injection via solenoid injectors, common rail 3rd generation fuel injection system, fixed geometry turbocharger, electronic EGR	75 PS	190 Nm
1.6 Duratorq TDCi (95 PS (71 kW))	4 cylinders in line, SOHC, 8 valves, alloy cylinder head, direct injection with high-pressure, common rail multipoint fuel injection system, turbocharger with intercooler, electronic EGR	95 PS	215 Nm

<sup>a)</sup>Tested in accordance with ISO 1585. **Note** all diesel engines are fitted with a standard vDPF (vaporiser Diesel Particulate Filter).

## Ford EcoBoost. International Engine of the Year 2014, for 3rd year running

The diamond-like coating on the piston rings reduces friction; the turbocharger, direct injection and variable valve timing boost efficiency. The result is remarkable performance from such an economical petrol engine. Winner of the International Engine of the Year Awards 2012, 2013 and 2014, the 1.0-litre EcoBoost develops 100 PS of power.





# Making life easy

Our range of finance, service and assistance options is designed with just one thing in mind – making life easy for you.

## Ford Transit24

At Ford we recognise the importance of minimising downtime, inconvenience and expense – that's why we provide first-class aftersales support.

When it comes to the service, maintenance and repair of your Ford commercial vehicles, look no further than your nearest Transit Centre. Dedicated to looking after your vehicle, Transit Centres offer specialised workshop equipment, tools and training, and can look after all your service, maintenance and warranty work.

### Convenient servicing

**While-you-wait servicing** Your commercial vehicle can be serviced when it suits you. Late night service appointments are available at least once a week and we respond to link online service booking requests within twenty minutes.

**Collection and delivery** This can be arranged at the time of your service booking for locations within a reasonable travelling time. So that it looks its best, your vehicle will be washed.

**Fleet National Pricing** Maximum recommended pricing for fleets with over 25 vehicles ensures you get the best price for routine services and fixed-content job.

**MOTs and more** Transit Centres can handle MOTs (including Class 5 and 7 tests), tachograph servicing and speed limiting (VOSA approved).

### Other benefits

**Ford parts availability** Any parts required will either be in stock or delivered anywhere on the UK mainland by 9am the next morning.

**Genuine Ford parts quality** All parts are designed and engineered by Ford, to Ford standards. Parts fitted to a vehicle outside of warranty carry a 'fitted in service' parts warranty.

**Ford diagnostics** For speedy and accurate fault diagnosis, we provide a sophisticated, internet-linked vehicle diagnostics system.

**Ford trained technicians** Ford commercial vehicle dealers have Ford-trained technicians, supported by online technical information and a Ford technical hotline.

**Unscheduled repairs** When your commercial vehicles aren't working, neither are your drivers. Our priority is to get your vehicle back on the road as quickly and as efficiently as possible.

**Priority treatment for urgent repairs** Initial diagnosis on urgent (vehicle off-road) repairs is carried out on arrival, with parts ordered within two hours of arrival – especially helpful when a replacement vehicle won't do. We aim to complete most repairs the same working day.

### Dedicated backup from Ford

**Ford Fleet Electronic Recall Programme** This simplifies the process of recalls and improves communications with the operators of affected vehicles.

**Ford Fleet Service Centre** A dedicated team of experienced service advisors to assist with your aftersales issues.

**Ford Fleet Accident Management** Whatever the make of the vehicle, we offer a free, ethical and comprehensive accident management programme.

**Efficiency, accuracy and convenience are at the heart of the Ford Transit24 commercial vehicle service promise. So, whether it's servicing, maintenance or repair you need, be sure to come and see us.**

For more information and to find your nearest Transit Service Dealer, visit the aftersales support section at [www.ford.co.uk/fordfleet](http://www.ford.co.uk/fordfleet)

## Commercial Vehicle Finance

When it comes to financing your Ford Commercial Vehicle, our size and expertise means we're well placed to provide you with a wide range of finance products.

**Ford Credit\***: Provides a range of finance plans for Commercial Vehicle customers interested in owning their vehicle.

**Ford Lease^**: Specialises in contract hire and leasing and provides an alternative range of finance plans which can be tailored to suit your business. Business users only.

### Important Information:

\*Ford Credit: Finance subject to status. Guarantees may be required. Freepost Ford Credit.

Ford Credit is a trading style of FCE Bank plc, which is authorised by the Prudential Regulation Authority and regulated by the Financial Conduct Authority and Prudential Regulation Authority under firm reference number 204469.

^Ford Lease: Ford Lease is provided by ALD Automotive Ltd, trading as Ford Lease, Oakwood Park, Lodge Causeway, Fishponds, Bristol, BS16 3JA. ALD Automotive is registered in England No. 987418. For the purposes of the Data Protection Act 1998 the data controllers in relation to any information you supply are Ford Motor Company Limited, FCE Bank Plc and ALD Automotive. Finance subject to status. Guarantees and indemnities may be required. ALD Automotive is authorised and regulated by the Financial Conduct Authority.

### Services

To find the location of your nearest Transit Centre simply visit the Ford Dealer locator at [www.fordvans.co.uk](http://www.fordvans.co.uk)

**Ford Warranty** Every new Ford Fiesta Van and Ford Ranger is protected by a 3-year/ 60,000 mile\* warranty<sup>o</sup>.

Ford Transit, Transit/Tourneo Custom, Transit/Tourneo Connect and Transit Courier are protected by a 3-year/100,000 mile warranty<sup>o</sup>.

Ford Transit Chassis Cab One-Stop bodywork is covered by a 3-year/100,000 mile warranty<sup>o</sup> and a 3-year Perforation Warranty provided by the bodywork supplier.

**Ford Perforation Warranty** Ford Ranger, Transit, Transit/Tourneo Custom, Transit/Tourneo Connect, Transit Courier and Fiesta Van are covered by the Ford Perforation Warranty<sup>o</sup> for 12 years from the date of first registration. Please see your Ford Transit Specialist Dealer for details.

**Ford Assistance** Ford Transit, Transit Custom, Transit Connect and Ranger are supplied with a minimum of a 1-year Ford Assistance roadside package. Further details are available either on [www.ford.co.uk](http://www.ford.co.uk) or from your local Ford Dealer.

**Ford Accident Repair Centres** Approved Ford Accident Repair Centres meet rigorous Ford standards and are the best place to return your vehicle to its pre-accident condition.

### Contacts

**Ford Customer Relationship Centre** In the unlikely event that your Ford Dealer can't help you or if you need to speak to us directly, call 0203 564 4444 at local rates.

**Ford Rental** – local service nationwide Car and Van rental from our latest model range. Contact your local Ford Dealer for more information.

**Ford Motability** Call our Ford Motability team on 0345 6040019

\* year 1 - unlimited mileage

<sup>o</sup> Subject to terms and conditions

## Dimensions

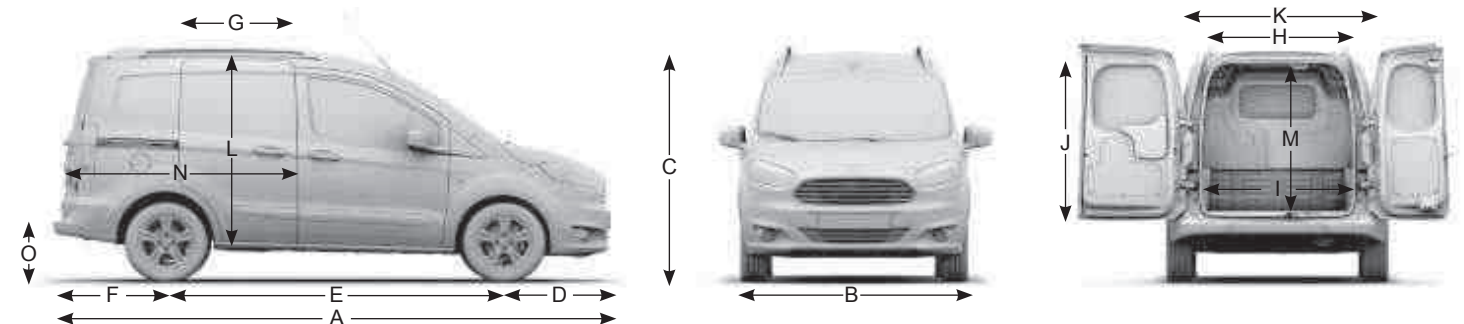
<b>A</b>	Overall length	4157
<b>B</b>	Overall width without mirrors	1764
<b>B</b>	Overall width with mirrors	2060
<b>C</b>	Overall height (unladen without roof rails)	1747
<b>D</b>	Front overhang	819
<b>E</b>	Wheelbase	2489
<b>F</b>	Rear overhang	849
<b>G</b>	Side door entry width (with bulkhead/without bulkhead)	453/601
<b>H</b>	Rear door opening width at floor level	1104
<b>I</b>	Loadspace width between wheel arches	1012
<b>J</b>	Rear door opening height	1100
<b>K</b>	Loadspace width	1488
<b>L</b>	Side door opening height	1044
<b>M</b>	Loadspace floor to roof	1244
<b>N</b>	Loadspace length (max; to bulkhead)	1620
<b>N</b>	Loadspace length (laden to belt line)	1358
<b>N</b>	Loadspace length (passenger's fold-flat seat down)	2593
<b>O</b>	Loading height (unladen)	536
	Front track	1494
	Rear track	1479
	Ground clearance	145
	Cargo volume Van (cu. m) VDA/SAE	1.9/2.3
	Cargo volume Van (cu.m) VDA/SAE with flexible bulkhead	2.4/2.6
	Cargo volume Kombi (cu.m) (2nd row seat up) VDA/SAE	0.7/1.0
	Cargo volume Kombi (cu.m) (2nd row seat folded) VDA/SAE	1.7/1.9

### Additional information

#### Interior – Front

Effective headroom	1152
Maximum effective leg room	1066
Shoulder room	1384
Hip room	1321
Turning circle (m)	
Kerb to kerb	10.5
Wall to wall	10.9

All dimensions (shown in mm) are subject to manufacturing tolerances and refer to minimum specification models and do not include additional equipment. These illustrations are for guidance only. Dimensions may vary dependent on the model and equipment fitted.



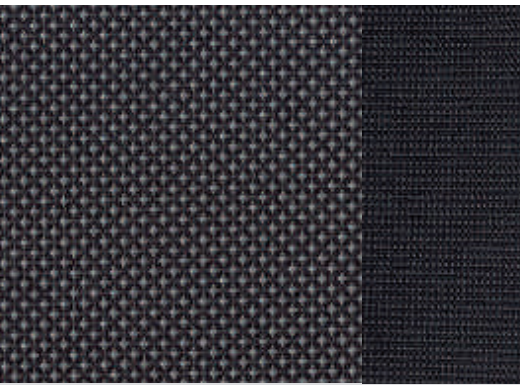
## Allergy-friendly interior

Transit Courier's interior uses materials that minimise the risk of an allergic reaction. A high-performance pollen filter helps prevent dust and pollen entering the passenger compartment. (Standard)



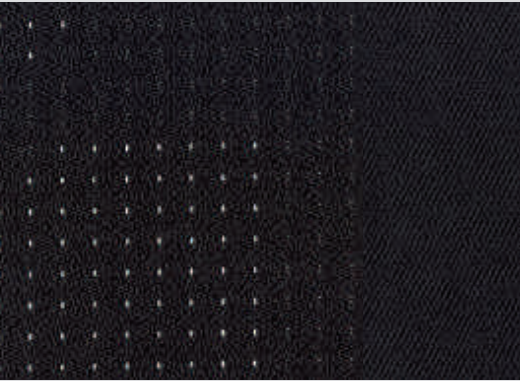
# Colour and trim

Choose the colour and trim that you think best reflects your business brand.



## 1. Base

Seat insert: Netdot in Soft Charcoal.  
Seat bolster: Max in Charcoal Black.



## 2. Trend

Seat insert: Babylon in Charcoal Black.  
Seat bolster: Light Commercial Twill in Charcoal Black.



**Blazer Blue**  
Solid body colour



**Moondust Silver**  
Metallic body colour\*



**Tectonic Silver**  
Metallic body colour\*



**Frozen White**  
Solid body colour



**Shadow Black**  
Metallic body colour\*  
Available from September 2015



**Magnetic**  
Metallic body colour\*



**Race Red**  
Solid body colour



**Deep Impact Blue**  
Metallic body colour\*



**Iceberg**  
Metallic body colour\*  
(available on Trend series only)

\*Metallic body colours are options at extra cost.  
**Note** The images used are to illustrate body colours only and may not reflect current specification. Colours and trims reproduced within this brochure may vary from the actual colours, due to the limitations of the printing processes used.

# 12-year perforation warranty

The new Transit Courier owes its durable exterior to a thorough multi-stage painting process. From the wax-injected steel body sections to the hard-wearing top coat, new materials and application processes will ensure it retains its good looks for many years to come.

Zinc coating

Phosphate coat

Electrocoat

Top coat

Clearcoat







MY 2015.75 GBR en

**Illustrations, descriptions and specifications.** This catalogue was correct at the time of going to print. However, Ford policy is one of continuous product development. The right is reserved to change specifications, colours and prices of the models and items illustrated and described in this publication at any time. For the latest details always consult your Ford Dealer. **Optional equipment.** Throughout this publication, wherever a feature is described as being an 'Option' or 'Option Fitment/Pack' etc, you should assume that it will be at extra cost to the base vehicle, unless specifically stated to the contrary. All models and colour combinations are subject to availability. **Note.** Some images portrayed are of a pre-production model and/or are computer generated, therefore, the design/features on the final version of the vehicle may differ in various respects. In addition, some of the features shown on the vehicles may be optional. **Note.** This brochure contains both original Ford accessories as well as a range of products from our suppliers. **+**The identified accessories are carefully selected third party supplier branded accessories which do not come with a Ford warranty but are covered by the third party supplier's own warranty, the details of which can be obtained from your Ford Dealer. **Note.** The Bluetooth® word mark and logos are owned by the Bluetooth SIG, Inc. and any use of such marks by Ford Motor Company is under licence. The iPod word mark and logos are the property of Apple Inc. Other trademarks and trade names are those of their respective owners. **Note.** Some driver assistance features and safety features described in this brochure are designed to function using sensors, whose performance may be affected under certain weather or environmental conditions.

**The Government fuel figures** do not express or imply any guarantee of the fuel consumption of any particular vehicle. The vehicles themselves have not been tested and there are inevitably differences between individual vehicles of the same model. In addition, a vehicle may incorporate particular modifications. Furthermore, the driver's style and road and traffic conditions, as well as the extent to which the vehicle has been driven and the standard of maintenance, will affect its fuel consumption. **Insurance groups** are only as recommended by the Association of British Insurers. You should always consult your insurance adviser for confirmation.



Ford and BP – working together to reduce fuel consumption and emissions.



When you have finished with this brochure please recycle it.



International Engine of the Year  
Ford 1.0 litre EcoBoost



**Ford One Call**

In the unlikely event that your Ford Dealer can't help you or if you need to speak to us directly, call 0203 564 4444

**Ford Rental - local service nationwide**

Car and Van rental from our latest model range. Contact your local Ford Dealer for more information

**Ford Motability**

Call our Ford Motability team on 0345 6040019

**Finance**

Ford Credit Customer Services 0845 712 5490  
Ford Lease Customer Services 0844 600 1405

Published by Ford Motor Company Limited, Brentwood, Essex, England.  
Registered in England No. 235446.  
FA 1587/2  
BJN 204183. FoE H59E.  
PN 577502/0815/15m/GBR en  
April 2015.  
© Ford Motor Company Limited.

[www.ford.co.uk](http://www.ford.co.uk)