

FORD TRANSIT CONNECT



Go Further



Visionary. Ingenious. Remarkable.
Every vehicle bears his signature.

Henry Ford

Make your work a pleasure

Car-like comfort, durable seating and a commanding driving position make the Transit Connect a relaxing and comfortable place to be. Great to drive, great to sit in, offering a high-quality finish without compromising everyday practicality.



The new headquarters

The Ford Transit Connect is built to take on tough work and retain its eye-catching good looks. With the latest fuel-efficient engines and smart technology, it offers today's business a real competitive edge.



Three up front

The dual passenger seat allows the option of an extra passenger in the cab if required. The centre seat can also fold down to create a writing surface, and flips up to reveal a convenient storage box. (Standard on Trend and Limited)

Vehicle shown is a Ford Transit Connect Trend (L1) in Moon dust Silver metallic body colour (option), with alloy wheels (option).

Engineered for durability. Tested for toughness

Like all Ford Transits, the Transit Connect has durability in its DNA. A relentless testing programme ensures that it's a vehicle that lasts.



The stocktake

There's room for two Europallets and 3-metre long* items in the L1 van. L2 models can take a standard 8' x 4' board in the load box and 3.4-metre long* items.

*In vehicles fitted with dual passenger seat and load-through bulkhead.
Vehicle shown is a Ford Transit Connect Trend (L2) in Moon dust Silver metallic body colour (option) with alloy wheels (option).



Front overhead storage shelf

Convenient storage shelf keeps documents and other items within easy reach. (Standard)



250,000 door shuts

We opened and closed the doors and bonnet over 250,000 times in real-world conditions to help ensure they will never let you down.



Load-through bulkhead

Carry items up to 3.0 metres in length in the L1 van, thanks to the clever load-through bulkhead. L2 models are capable of holding 3.4-metre long items. (Load-through bulkhead standard on Trend and Limited)

Static Cornering Fog Lights¹⁾

Designed to provide additional illumination of the area to the side of the vehicle when cornering, making night-time parking and turning safer. (Option, Standard on Limited)



The bodyguard

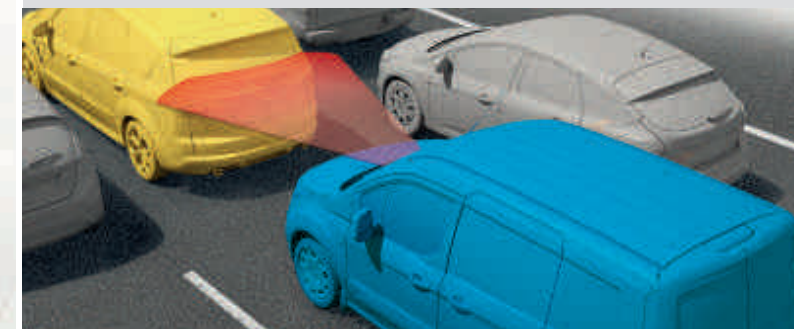
A comprehensive line-up of safety and driver assistance features makes use of the latest technology to protect the driver, passengers and their belongings.



Active City Stop[®]

Designed to help reduce the likelihood or consequences of your van colliding with the vehicle in front in slow-moving traffic by applying the brakes if it is detected that a collision is likely. (Option)

- [®]Uses sensors.
- ¹⁾Safety feature.
- ²⁾Driver assistance feature
- ¹⁾Operates at speeds over 40mph on multi-lane roads with clearly visible lane markings.



Lane Keeping Alert and Lane Keeping Aid^{®1)}

Designed to recognise when you approach lane markings without using the indicator, and alerts you with vibrations through the steering wheel. If the system detects that an unintentional lane change is likely to occur, it is designed to apply a steering torque back towards the lane you were in. (Optional on Trend and Limited)



Load Adaptive Control (LAC)^{®1)}

Designed to adjust the responses of the ESC[®] system to compensate when the vehicle is unladen, partially, or fully laden. (Standard)

Occupant safety

A full range of airbag protection is available, including driver and passenger* front airbags, seat-mounted side, head and thorax airbags and side curtain airbags¹⁾. (Driver's airbag standard all other airbags optional)

Acceleration Control^{®1)}

Acceleration Control is designed to limit acceleration when the vehicle is empty to help reduce fuel consumption. Available from early 2016

Trailer Sway Control^{®1)}

When it detects trailer sway, the system is designed to reduce engine torque and apply the brakes to the appropriate wheel(s) to help maintain control (Standard with Ford fitted tow bar)

Electronic Stability Control (ESC)^{®1)}

ESC[®] is designed to help you maintain control in extreme driving conditions. It senses when you are deviating from your chosen line and aims to keep you on track by automatically regulating braking and engine output. (Standard)

Emergency Brake Assist^{®1)}

Designed to recognise an emergency braking situation and increases the pressure within the braking system to provide optimum stopping power. (Standard)

Note: A rear-facing child seat should never be placed in the front passenger seat when the Ford vehicle is equipped with an operational front passenger's airbag.
Vehicle shown is a Ford Transit Connect Trend (L2) in Race Red solid body colour with alloy wheels (option).

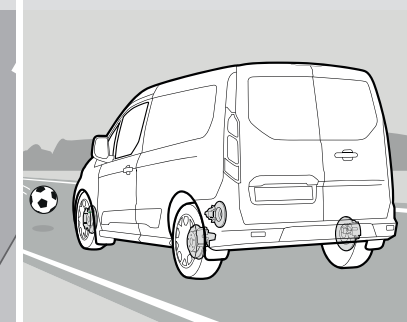
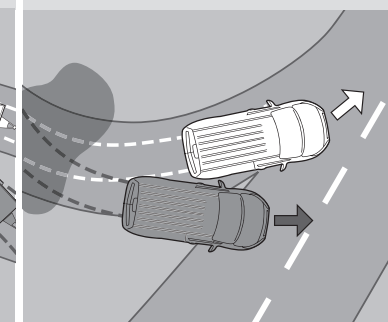
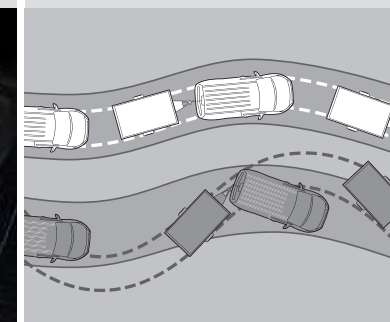
Parking distance sensors, front and rear²⁾

With the Ford Transit Connect, you won't have to pass by those more challenging parking spaces. An audible warning helps you judge the distance between your vehicle and obstacles at the front and rear, for easier parking and manoeuvring. (Option)



Rear-view camera

Select reverse and the view from the rear-view camera is displayed automatically in the internal mirror, or Multi-Functional Display. Marker lines overlaid on the camera image indicate where the vehicle is heading. (Option)



Ford SYNC 2 with Voice Control and Touchscreen

Select music, control navigation and interior temperature, make and receive hands-free calls and choose contacts from your phone list with remarkably simple voice commands, or via the 6" colour touchscreen. It will even read out your incoming text messages when paired with a compatible mobile phone. (Option)



The board meeting

Ford Transit Connect comes with a wealth of useful features to help make your life a little easier and delivers the most connected and enjoyable driving experience.

Vehicle shown is a Ford Transit Connect Trend (L2) with Route in Charcoal Black interior and Ford radio/CD player with Ford SYNC and DAB audio system. (Standard) (vehicle shown features optional equipment)

Note The Bluetooth® word mark and logos are owned by the Bluetooth SIG, Inc. and any use of such marks by Ford Motor Company Limited and its associated companies is under licence. Other trademarks and trade names are those of their respective owners.



Bluetooth® connectivity

Bluetooth® hands-free phone with SYNC's Voice Control System technology provides a wireless mobile phone connection with voice recognition control for audio, phone and Climate control (when DEATC is specified).



Audible SMS

Have your incoming text messages read to you from your compatible connected phone, including commonly-used abbreviations and emoticons, and you can even respond with a choice of 15 pre-set text messages.

Dual-zone Electronic Automatic Temperature Control (DEATC) air conditioning

Can be adjusted separately for the driver and front passenger, with up to 4°C variation from side to side. (Option on Trend, Standard on Limited)



12V auxiliary power point in load area

A handy socket provides an ideal power source for charging tools or other devices with ease. (Standard on Trend and Limited)

Bluetooth®-enabled audio-streaming

Stream your music collection from your compatible MP3 player or mobile phone to the vehicle's audio system.



Centre console with storage bin including power point and AUX MP3 socket

Open centre console with a 12-volt socket, AUX connectivity, USB connectivity with charging, two cup-holders and storage areas designed to accommodate an A4 folder. (Option)



Cruise control with ASLD

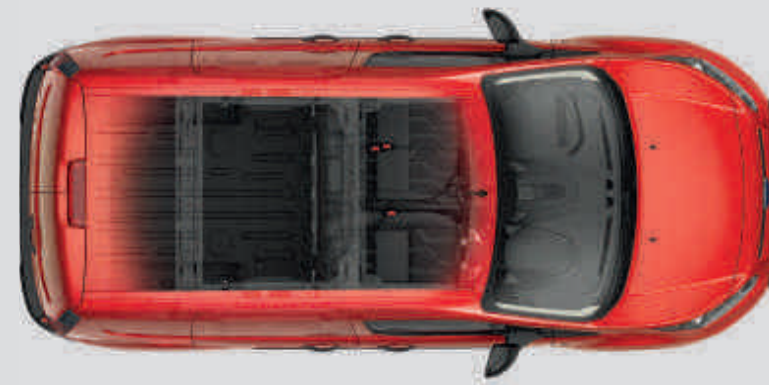
Lets you set the pace. The Adjustable Speed Limiting Device allows you to set a maximum speed to avoid inadvertently exceeding the speed limit. (Option, Standard on Limited)



Transit Connect Van L1

The L1 van is capable of carrying two Europallets and 3-metre long items (when using the load-through bulkhead and dual passenger seat). The driver orientated cab provides high levels of stowage and functionality.

2.9
cu.m



Transit Connect Van L2

The L2 van can accommodate 3.4-metre long items (when using the load-through bulkhead and dual passenger seat) and has room for 8x4 sheet stowage behind the bulkhead.

3.6
cu.m



Transit Connect Double Cab-in-Van L1

Double Cab-in-Van offers a high level of flexibility between loadspace and space for passengers. The clever second row seats are split 60/40. The seat backs fold flat and the whole seat tumbles forward or can be removed completely to allow maximum use of the cargo space. An ingenious movable bulkhead keeps your passengers safe from your load.

1.2
cu.m

with second row seats in place



Fitment of DCIV glazed second row option may affect taxation class. Consult a tax advisor or local tax office.

Transit Connect Double Cab-in-Van L2

The Double Cab-in-Van L2 offers the same flexibility as the L1, but with even more loadspace, either with the 2nd row seats in place or folded down into the footwell.

1.6
cu.m

with second row seats in place



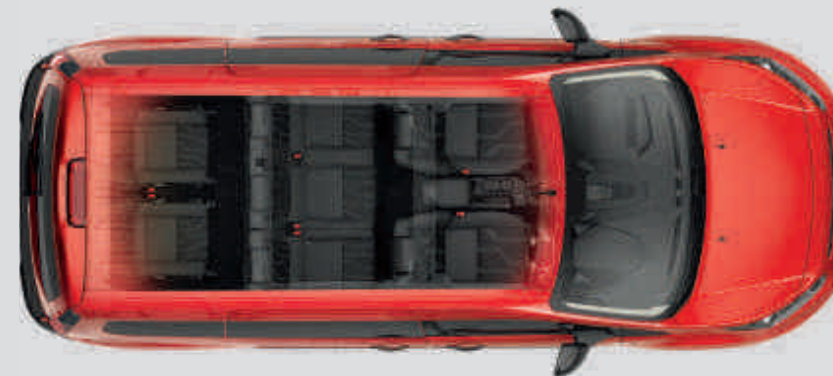
Fitment of DCIV glazed second row option may affect taxation class. Consult a tax advisor or local tax office.

Transit Connect Kombi M1 L2, 7-seat

The Kombi M1 is the ideal combination for maximum passenger accommodation, whilst giving you the flexibility to fold all seats flat to convert it into a load lugger.

2.6
cu.m

with all rear seats folded



Underseat storage with USB and AUX connectivity

The handy underseat storage area keeps your belongings secure and features a 12-volt socket, an auxiliary socket and a USB for more connectivity. (Option)



Flexible dual passenger seat

The centre seat folds down to provide a writing surface and also flips up to reveal a storage box. The outer seat base folds upwards (cinema style) to allow tall loads and boxes to be carried in the front passenger space, or drops down under the fold-down seatback to give access to the load-through hatch. (Standard on Trend and Limited Van)



8x4 bulkhead

The L2 Van can carry 8x4 sheets of material diagonally over the top of a specially designed bulkhead.

Adapts to any challenge

When you need a partner that works as hard as you do, look no further than the Transit Connect Kombi. Designed to handle the toughest daily routine, its spacious interior and additional flexibility make it an impressive proposition for carrying almost any combination of cargo or passengers.



Split-folding functionality

Transit Connect Kombi's folding second row seats have a 60/40 split, while the third row seats are split 50/50 for even greater versatility.



Perfect for long or awkward loads

With fold-flat second and third row seats, plus a fold-flat front passenger seat, there's plenty of easily-adapted space for long or awkward loads.



Rear seats fold flat to maximise loadspace

The second and third row seats fold flat, and the mesh bulkhead can be moved to help protect occupants and load.

The work-life balance

For business, pleasure or a combination of both, the rugged and versatile Transit Connect Kombi offers a clever balance of flexible, comfortable seating and robust build quality.

Designed and built for the trials of life

With its easily-adjustable seating configurations, you can adapt the Transit Connect Kombi to your changing needs.

Commercial strength, surprising comfort

Transit Connect Kombi's roomy interior is surprisingly comfortable, with supportive seats and ample space for everyone. The third row seat backs even recline for extra comfort.

Hard-wearing materials for the toughest of loads

Sophisticated, hard-wearing seat fabric and tough interior trim help to ensure the Transit Connect Kombi will retain its good looks for years to come.

Flexible and durable seat design

Transit Connect Kombi takes adaptability to a new level. Second and third row seats fold flat to create a range of passenger and load-carrying possibilities.



Enjoy the best of both worlds

With its wide-opening sliding side doors and glazed rear doors, it's easy to access Transit Connect Kombi's accommodating interior, whether you're carrying passengers, cargo, or a combination of both.



The range



Base

Exterior features

- 16" steel wheels
- Door mirrors with blind spot eliminator
- Kerbside load door
- Rear fog lights
- Day running lights
- High-mounted rear brake light
- Full size spare wheel (not ECONetic)
- Easy-Fuel capless refuelling system

Option packs available:

- Fuel Economy Pack (standard on ECONetic)
- City Safety Pack
- Comfort Pack
- Functional Pack

Trend

Exterior features in addition to Base

- 16" steel wheels with full wheel covers
- Body colour front bumper
- Front fog lights
- Body colour rear bumper end caps
- Electrically-operated and heated door mirrors
- Heated windscreen

Option packs available:

- Fuel Economy Pack
- City Safety Pack

Limited

Exterior features in addition to Trend

- Body colour bodyside mouldings
- Body colour door mirrors and door handles
- Power fold door mirrors (heated)
- 16" alloy wheels with locking wheel nuts
- Static cornering lights
- Thatcham alarm (Cat 1)
- Chrome headlamp bezels
- Chrome radiator insert

Ford ECONetic Technology

- Ford Duratorq TDCi advanced diesel engines – provide exceptional fuel economy and low CO₂ emissions
- Ford Auto-Start-Stop
- Ford Smart Regenerative Charging
- Gear Shift Indicator
- Ford Battery Management System – improves battery life, fuel consumption and ensures ready-to-go reliability
- Speed Limiter (70mph switchable)
- Eco Mode



or 1 year service intervals

Generous service intervals of up to 20,000 miles (or 1 year) further reduce your running costs.

EcoBoost engine

Ford EcoBoost technology gives you the power of a big engine with the fuel economy and emissions of a small one. The latest ultra-efficient 1.0-litre EcoBoost engine produces an impressive 100 PS, yet it delivers a combined fuel consumption of just 50.4mpg and CO₂ emissions of only 129 g/km (unladen).

Auto-Start-Stop

The latest Ford test figures show that Auto-Start-Stop can significantly reduce fuel consumption and CO₂ emissions with frequent stops in heavy traffic, and mixed driving conditions. (Standard on ECONetic model and 1.5TDCi 120PS Powershift, option on Base and Trend)

Automatic transmission

Diesel engine models are now available with automatic transmission, making Transit Connect even easier and more relaxing to drive. (Option on diesel models only)

Fixed Speed Limiters

Fixed speed limiters are available on diesel engines across the range (Option) Fixed speed limiters are hard wired and cannot be overridden or de-activated.

Ford MyKey®

This innovative feature lets you tailor and limit vehicle settings – like top speed and audio volume – to suit individual users. This can help prevent the vehicle being used in a manner that could detract from good and safe driving. (Available only on Stage 6 models)

CO₂ 74.3
99g/km mpg

*Combined fuel consumption and CO₂ emissions for L1 van (NI) with 1.5 Duratorq TDCi 100 PS, Auto-Start-Stop and 62 mph Speed Limiter.





Base

Interior features

- Electrically-operated front windows with one-shot down on driver's side
- Remote central double locking
- DAB radio with USB and Bluetooth, two front speakers
- Trip computer
- Rake and reach adjustable steering wheel with radio controls
- Dual cup holders
- Instrument panel stowage box with 12-volt socket
- DIN compliant cargo tie down hooks & side mounting points
- ISO/DIN compliant full steel bulkhead
- Overhead stowage
- Load box light
- Immobiliser

Trend

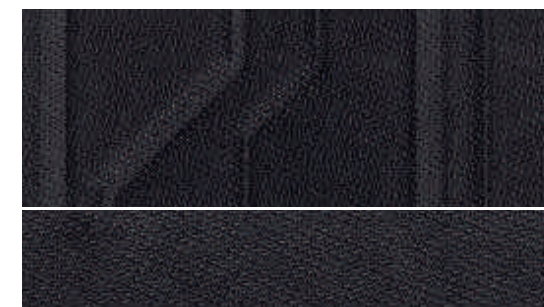
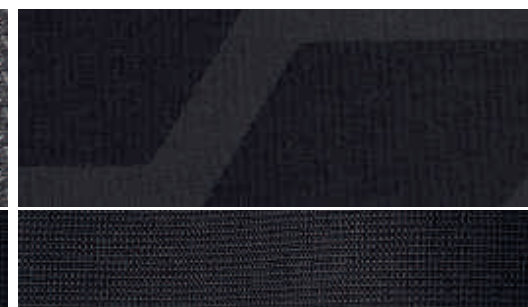
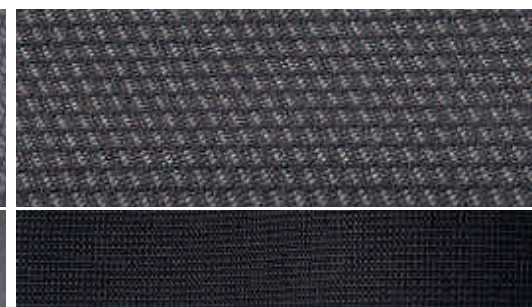
Interior features in addition to Base

- DAB radio/CD system with 3.5" dot-matrix multi-function display, MP3 capability SYNC with Emergency Assistance, Bluetooth with Voice Control and four speakers
- Front dome light with two map lights
- 12-volt socket in cargo area
- Flexible dual passenger seat
- Load-through bulkhead
- 8-way adjustable driver's seat including lumbar support
- Lockable glovebox
- Plastic cargo floor liner

Limited

Interior features in addition to Trend

- Dual zone Electronic Automatic Temperature Control / Air-Conditioning
- Cruise Control with ASLD
- Limited level trim with heated driver's seat
- Rear Parking Sensors
- Auto wipers / headlamps
- Leather steering wheel
- Second remote key
- LED load compartment lighting
- Auto-dimming rear view mirror



Base

Insert: Artec in Pewter
Bolster: Prima in Pewter

Base

Insert: Traxon in Charcoal Black
Bolster: Max in Charcoal Black

Trend

Insert: Route in Charcoal Black
Bolster: Max in Medium Stone

Limited

Insert: Chicane in Charcoal Black
Bolster: Malt in Charcoal Black

ClimAir® wind deflector*

Reduces turbulence and noise for a more enjoyable drive with the windows down, even during light rain. (Accessory)

Base roof carriers, lockable

Roof carrier is the base for various roof transportation attachments. Roof carrier can be extended with a fourth bar for L2 models. (Accessory)

Rear ladder

For easy access to the roof. (Option and accessory, with Cargo Doors only)



+Item covered by third party supplier's warranty, please see back cover for details.
For more accessories for your Transit Connect visit www.ford-accessories.co.uk
For a range of Ford branded items – from clothing to lifestyle products and model cars – visit www.fordlifestylecollection.com

Enhanced versatility

Storage solutions, extra protection and greater versatility are all available for the Transit Connect.



Rear window protection grille

Grille fixes to inside of rear windows for enhanced security without obscuring rearward vision. (Option and accessory)



Contoured mudflaps

Available as sets for front and rear, these practical hard-wearing mudflaps protect the bodywork from stone chips, helping to keep your Ford Transit Connect clean by reducing road spray. (Option and accessory)



Q-Top® (Q-Tech) roof gallery*

Lightweight aluminium construction allows additional load*. Ideal for transportation of large, long or bulky items and gives you more flexibility in your daily business. Also available with a ladder roller at the rear end for easier loading. (Accessory)

*Please refer to vehicle weight and load specifications.



Tow bar, fixed and detachable versions

For extra transport and stowage capability, the tow bar can tow up to 1,300 kg* depending on engine. A detachable tow bar is also available that can be detached if not in use. (Option and accessory)

*Towing capacity depends on engine and vehicle series, please refer to vehicle weight and load specifications.



Osram® LED daytime running lights and fog lights*

Whatever the light conditions, the combined fog light with daytime running light functionality and energy efficient LED technology help ensure you get noticed by other road users and pedestrians. (Accessory)



Dension® Car Dock for Smartphones*

Multipurpose sound transmitter, mounts on windscreen or dashboard, advanced sound quality via your Ford's audio system, with built-in microphone, AUX and FM audio output. (Accessory)

Get the most from your new Ford

We want to help you get the most from your new Ford. And to do that, you need to know how much it is designed to safely carry, both in terms of payload and load volume. Your Ford Transit Centre can provide professional advice on important specification aspects, and help to find the right van for your budget and business needs.

The Ford Transit Connect is designed to carry cargo – and lots of it.

Choosing a new van is an important decision with lots of factors to be considered. While some aspects, like selecting the most appropriate derivative, identifying the intended primary use and determining load box size are relatively simple, others, such as calculating payload are more complex.

Payload capacity

To calculate payload, you need to know two things: the vehicle's gross vehicle mass (GVM) and its kerb mass.

Payload = Gross vehicle mass minus kerb mass

Gross Vehicle Mass (GVM)

GVM is the maximum permissible weight of the vehicle when loaded and ready to go – that includes the weight of the vehicle itself, ancillaries, driver and crew (assuming the industry standard weight of 75 kg/person), fluids, fuel tank 90% full (1 litre of diesel = approximately 0.85 kg), optional and aftermarket equipment, and cargo.

Kerb Mass

Kerb mass is the weight of a standard-specification Base series vehicle, including fluids and fuel tank 90% full, but without the driver, crew or cargo.

So to help you choose the right vehicle for your needs, here are some more detailed explanations about the factors that can influence a vehicle's payload. These include, but are not limited to:

If payload is critical to your business, or if you plan to carry cargo at, or close to, the vehicle's maximum capacity, your Ford Transit Centre can help. Using their specialist expertise and knowledge, they can advise you on the exact specification of vehicle required to meet your individual business needs.

Driver and crew

We calculate the weight of the driver and crew based on the industry-standard weight of 75 kg/person. Remember that the driver and crew are not included in the kerb mass figure, so when a driver or crew boards the vehicle, its payload will be reduced accordingly.

Factory-fitted options

Most factory-fitted options will affect a vehicle's payload. For example, air conditioning can add approximately 13 kg to a vehicle's weight, and therefore reduce its payload accordingly.

Series

All kerb masses quoted in this brochure are for standard-specification Base series models. Trend and Limited series models will generally weigh more than Base series due to the increased level of features and equipment.

Manufacturing tolerances

Variations in manufacturing and production processes mean that no two vehicles are likely to weigh exactly the same.

Accessories and aftermarket conversions

It is important to think carefully about what you do with your vehicle after you take delivery. Any accessories fitted or aftermarket conversions to the vehicle may adversely affect its payload. Please speak to your Ford Transit Centre for more information and advice.

Weights and loads

	Gross payload (kg) ^a	Gross vehicle mass (kg)	Kerb mass (kg) [*]	Front axle plated mass (kg)	Front axle kerb mass (kg)	Rear axle plated mass (kg)	Rear axle kerb mass (kg)	Axle ratio	Max. GTM (kg)	Trailer Plate (kg) braked (unbraked)	CO ₂ emissions	Fuel consumption in mpg ^b		
												Urban	Extra urban	Combined
200 L1 Transit Connect														
1.0 EcoBoost 100 PS (74 kW) with S/S	593	1960	1367	1125	807	1050	560	4.27	2880	1200 (705)	129	44.1 (6.4)	55.4 (5.1)	50.4 (5.6)
1.5 TDCi 120 PS (88 kW) Automatic with standard S/S	613	2040	1427	1125	851	1050	576	4.53	2940	1200(735)	129	52.3 (5.4)	60.1 (4.7)	56.5 (5.0)
1.6 TDCi (75 PS (55 kW))	598	2005	1407	1125	823	1050	584	3.56	2905	1200 (725)	124	51.4 (5.5)	65.7 (4.3)	58.9 (4.8)
1.6 TDCi (75 PS (55 kW)) with S/S	588	2005	1417	1125	828	1050	589	3.56	2905	1200 (725)	115	58.9 (4.8)	67.3 (4.2)	64.2 (4.4)
1.6 TDCi (95 PS (70 kW))	598	2005	1407	1125	823	1050	584	3.56	3155	1300 (725)	124	51.4 (5.5)	65.7 (4.3)	58.9 (4.8)
1.6 TDCi (95 PS (70 kW)) with S/S	588	2005	1417	1125	828	1050	589	3.56	3155	1300 (725)	115	58.9 (4.8)	67.3 (4.2)	64.2 (4.4)
1.6 TDCi (115 PS (85 kW))	599	2015	1416	1125	836	1050	580	3.66	3165	1300 (730)	124	51.4 (5.5)	65.7 (4.3)	60.1 (4.7)
200 L1 Transit Connect Base Econetic														
1.5 TDCi ECOnetic (100 PS (74 kW)) with standard S/S	619	2015	1396	1125	833	1050	563	3.56	n/a	n/a	105	65.7 (4.3)	72.4 (3.9)	70.6 (4.0)
1.5 TDCi ECOnetic (100 PS (74 kW)) with standard S/S and 62mph speed limiter	619	2015	1396	1125	833	1050	563	3.56	n/a	n/a	99	65.7(4.3)	80.7 (3.5)	74.3 (3.8)
220 L1 Transit Connect High Payload														
1.5 TDCi (120 PS (88 kW)) with Automatic transmission (Trend only)	765	2235	1470	1175	864	1250	606	4.53	2940	1200 (750)	129	52.3 (5.4)	60.1 (4.7)	56.6 (5.0)
1.6 TDCi (75 PS (55 kW))	798	2215	1417	1125	828	1250	589	3.56	2915	1200 (730)	124	51.4 (5.5)	65.7 (4.3)	58.9 (4.8)
1.6 TDCi (75 PS (55 kW)) with S/S	788	2215	1427	1125	833	1250	594	3.56	2915	1200 (730)	115	58.9 (4.8)	67.3 (4.2)	64.2 (4.4)
1.6 TDCi (95 PS (70 kW))	798	2215	1417	1125	828	1250	589	3.56	3165	1300 (730)	124	51.4 (5.5)	65.7 (4.3)	58.9 (4.8)
1.6 TDCi (95 PS (70 kW)) with S/S	788	2215	1427	1125	833	1250	594	3.56	3165	1300 (730)	115	58.9 (4.8)	67.3 (4.2)	64.2 (4.4)
220 L1 Transit Connect DCiV														
1.6 TDCi (75 PS (55 kW))	721	2230	1509	1125	884	1250	625	3.56	2920	1200 (750)	124	51.4 (5.5)	65.7(4.3)	58.9 (4.8)
1.6 TDCi (75 PS (55 kW)) with Auto Start-Stop	711	2230	1519	1125	889	1250	630	3.56	2920	1200 (750)	115	58.9 (4.8)	67.3 (4.2)	64.2 (4.4)
1.6 TDCi (95 PS (70 kW))	721	2230	1509	1125	884	1250	625	3.56	3170	1300 (750)	124	51.4 (5.5)	65.7 (4.3)	58.9 (4.8)
1.6 TDCi (95 PS (70 kW)) with Auto Start-Stop	711	2230	1519	1125	889	1250	630	3.56	3170	1300 (750)	115	58.9 (4.8)	67.3 (4.2)	64.2 (4.4)
210 L2 Transit Connect														
1.0 EcoBoost 100 PS (74 kW) with S/S	689	2085	1396	1175	815	1125	581	4.27	2920	1200(720)	129	44.1(6.4)	55.4 (5.1)	50.4(5.6)
1.6 TDCi 75 PS (55 kW)	688	2125	1437	1175	859	1125	578	3.56	2925	1200 (740)	128	51.4(5.5)	62.8(4.5)	57.7(4.9)
1.6 TDCi 75 PS (55 kW) with S/S	678	2125	1447	1175	864	1125	583	3.56	2925	1200 (740)	119	56.5 (5.0)	65.7(4.3)	61.4(4.6)
1.6 TDCi 95 PS (70 kW)	688	2125	1437	1175	859	1125	578	3.56	3175	1300 (740)	128	51.4(5.5)	62.8(4.5)	57.7(4.9)
1.6 TDCi 95 PS (70 kW) with S/S	678	2125	1447	1175	864	1125	583	3.56	3175	1300 (740)	119	56.5(5.0)	65.7(4.3)	61.4(4.6)
1.6 TDCi 115 PS (85 kW)	689	2135	1446	1175	872	1125	574	3.69	3185	1300(745)	128	49.6(5.7)	64.2(4.4)	57.7(4.9)
210 L2 Transit Connect Base Econetic														
1.5 TDCi ECOnetic 100 PS (74 kW) with standard S/S	699	2125	1426	1175	870	1125	556	3.41	n/a	n/a	109	62.8(4.5)	70.6(4.0)	67.3(4.2)
1.5 TDCi ECOnetic 100 PS (74 kW) with standard S/S and 62mph speed limiter	699	2125	1426	1175	870	1125	556	3.41	n/a	n/a	103	62.8(4.5)	76.3(3.7)	72.4(3.9)
240 L2 Transit Connect High Payload														
1.5 TDCi (120 PS (88 kW)) with Automatic transmission	851	2335	1484	1225	891	1300	593	4.53	2985	1200(750)	129	52.3(5.4)	60.1(4.7)	56.5(5.0)
1.6 TDCi(95 PS (70 kW))	953	2395	1442	1225	863	1355	579	3.56	3195	1200 (730)	128	51.4(5.5)	62.8(4.5)	57.7(4.9)
1.6 TDCi 95 PS (70 kW) with S/S	943	2395	1452	1225	868	1355	584	3.56	3195	1200 (730)	119	56.5(5.0)	65.7(4.3)	61.4(4.6)
1.6 TDCi 115 PS (85 kW)	954	2405	1451	1225	876	1300	575	3.69	3205	1200 (735)	128	49.6(5.7)	64.2(4.4)	57.7(4.9)
230 L2 Transit Connect DCiV (Crew Van)														
1.6 TDCi 95 PS (70 kW)	711	2270	1559	1175	913	1275	646	3.56	2940	1158(750)	128	51.4(5.5)	62.8(4.5)	57.7(4.9)
1.6 TDCi 95 PS (70 kW) with S/S	701	2270	1569	1175	918	1275	651	3.56	3140	1200 (750)	119	56.5(5.0)	65.7(4.3)	61.4(4.6)
1.6 TDCi 115 PS (85 kW)	697	2270	1573	1175	922	1275	651	3.69	3140	1200(750)	128	49.6(5.7)	64.2(4.4)	57.7(4.9)
230 L2 Transit Connect Kombi 5-Seater														
1.5 TDCi 100 PS (74 kW)	688	2270	1582	1175	922	1275	660	3.56	3140	1048(750)	124	52.3(5.4)	64.2(4.4)	58.9(4.8)
1.5 TDCi 100 PS (74 kW) with S/S	678	2270	1592	1175	927	1275	665	3.56	3140	1048(750)	115	60.1(4.7)	65.7(4.3)	64.2(4.4)
230 L2 Transit Connect Kombi 7-Seater														
1.5 TDCi 100 PS (74 kW)	713	2270	1557	1175	881	1275	676	3.56	3140	997(750)	124	52.3(5.4)	64.2(4.4)	58.9(4.8)
1.5 TDCi 100 PS (74 kW) with S/S	703	2270	1567	1175	886	1275	681	3.56	3140	997(750)	115	60.1(4.7)	65.7(4.3)	64.2(4.4)

L1 = Short wheelbase, **L2** = Long wheelbase ***Payload** = Gross vehicle mass, less kerb mass. All kerb masses quoted in this brochure are subject to manufacturing tolerances and are for Base models with minimum equipment and exclude spare wheel. Trend and Limited models will have greater kerb masses and, therefore, lower payloads due to the increased amount of standard equipment. Any additional options specified on the vehicle will reduce the payload accordingly. *****Represents the lightest kerbweight assuming full fluid levels and 90% fuel levels, subject to manufacturing tolerances and options, fitted. **Note** all diesel engines are fitted with a standard vDPF (vapouriser Diesel Particulate Filter). ^aThe declared fuel/energy consumptions and CO₂ emissions are measured according to the technical requirements and specifications of the European Regulations (EC) 715/2007 and (EC) 692/2008 as last amended. Fuel consumption and CO₂ emissions are specified for a vehicle variant and not for a single vehicle. The applied standard test procedure enables comparison between different vehicle types and different manufacturers. In addition to the fuel efficiency of a vehicle, driving behaviour as well as other non-technical factors are very important in determining a vehicle's fuel/energy consumption and CO₂ emissions. CO₂ is the main greenhouse gas responsible for global warming. A guide on fuel economy and CO₂ emissions which contains data for all new passenger car models is available at any point of sale free of charge or can be downloaded under <http://carfueldata.dft.gov.uk/>.



Overhead driver and passenger storage shelf

(Standard)

Dimensions

	Van L1	Van L2	DCV (Crew Van) L1	DCV (Crew Van) L2	Kombi M17/Seater L2
A Overall length	4418	4818	4418	4818	4818
B Overall width without mirrors	1835	1835	1835	1835	1835
B Overall width with mirrors	2137	2137	2137	2137	2137
C Overall height (unladen)	1861	1862	1836	1839	1840
D Front overhang	878	878	878	878	878
E Wheelbase	2662	3062	2662	3062	3062
F Rear overhang	878	878	878	878	878
G Side door entry width	612	839	612	839	839
G Side door entry width (Van with bulkhead)	433	660	-	-	-
H Rear door opening width below belt	1248	1248	1248	1248	1193
H Rear door opening width max	-	-	-	-	1193
I Loadspace width between wheel arches	1226	1226	1226	1226	1149
J Rear door opening height	1136	1136	1136	1136	1146
K Loadspace width at floor	1538	1538	1268	1268	1477
L Side door opening height	1228	1228	1228	1228	1141
M Loadspace floor to roof	1269	1269	1237	1237	1066
N Loadspace length (max to bulkhead)	1753	2153	845	1072	-
O Loadspace length (with bulkhead, laden to belt line)	1558	1958	-	-	-
O Loadspace length (back of front seat, at floor)	1831	2231	1828	2179	2179
O Loadspace length (max with load through bulkhead)	3000	3400	-	-	-
P Loading height (unladen)	599	599	593	586	597
Q Front track	1568	1568	1568	1568	1568
R Rear track	1585	1585	1584	1584	1584
S Ground clearance	152	159	154	165	163
T Cargo volume behind bulkhead VDA/SAE (m³)	2.6/2.9	3.2/3.6	-/1.2	-/1.6	-
T Cargo volume less bulkhead (SAE) (m³)	3.0	3.7	-	-	-
T Cargo volume less bulkhead, with front seat folded SAE (m³)	3.7	4.4	-	-	-
T Cargo volume (2nd row seat up) (SAE) (m³)	-	-	1.2	1.6	1.3
T Cargo volume (2nd row seat folded) (m³)	-	-	2.2	2.8	2.6
T Cargo volume (7 seats up)	-	-	-	-	0.3
Turning circle					
Kerb to kerb (m)	11.3	12.2	11.3	12.2	12.2
Wall to wall (m)	11.7	12.5	11.7	12.5	12.5
Additional information					
Interior – Front					
Effective headroom	1190	1190	1190	1190	1190
Maximum effective leg room	1046	1046	1046	1046	1083
Shoulder room	1465	1465	1465	1465	1465
Hip room	1376	1376	1376	1376	1376

L1 = Short wheelbase, L2 = Long wheelbase, All dimensions (shown in mm) are subject to manufacturing tolerances and refer to minimum specification models and do not include additional equipment. These illustrations are for guidance only. Dimensions may vary dependent on the model and equipment fitted.

Model availability

	L1					L2						
	Base	Base HP	ECONetic	Trend	Trend HP	Limited	Base	Base HP	ECONetic	Trend	Trend HP	Limited
Ford Transit Connect												
1.0 EcoBoost 100 PS (74 kW) Stage VI	-	-	-	●	-	-	-	-	-	-	-	-
1.5 TDCi 120 PS (88 kW) with Automatic transmission Stage VI	●	-	-	-	●	-	-	●	-	-	●	-
1.5 TDCi 100 PS (74kW) Stage VI	-	-	●	-	-	-	-	-	●	-	-	-
1.6 TDCi 75 PS (55 kW) Stage V	●	●	-	●	-	-	●	-	-	-	-	-
1.6 TDCi 95 PS (70 kW) Stage V	●	●	-	●	●	-	●	●	-	●	●	-
1.6 TDCi 115 PS (85 kW) Stage V	-	-	-	●	-	●	●	-	-	●	●	●
Ford Transit Connect Kombi M1												
1.5 TDCi 100 PS (74 kW) Stage VI	-	-	-	-	-	-	●	-	-	-	-	-
Ford Transit Connect DCIV (Crew Van)												
1.6 Duratorq TDCi 75 PS (55 kW) Stage V	●	-	-	-	-	-	-	-	-	-	-	-
1.6 Duratorq TDCi 95 PS (70 kW) Stage V	●	-	-	●	-	-	●	-	-	●	-	-
1.6 Duratorq TDCi 115 PS (85 kW) Stage V	-	-	-	-	-	-	-	-	-	●	-	-

● = Standard. **Note** all diesel engines are fitted with a standard vDPF (vaporiser Diesel Particulate Filter). L1 = Short wheelbase, L2 = Long wheelbase



Two Europallet loadspace

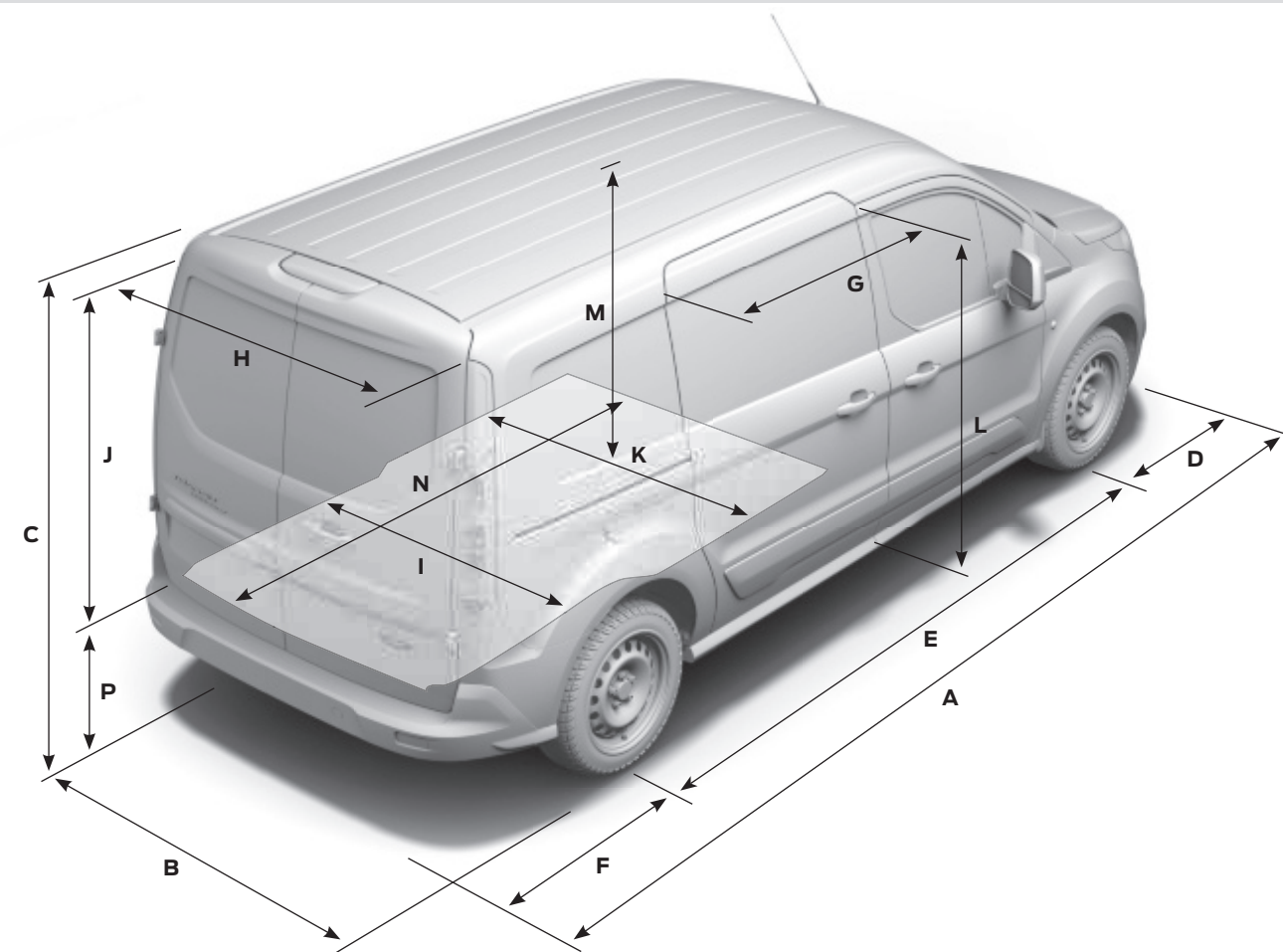
There's room for two Europallets in both L1 and L2 behind an ISO/DIN compliant bulkhead (restricted loading of front pallet in L1).

Sliding side load door with extra wide aperture on L2

(Standard)

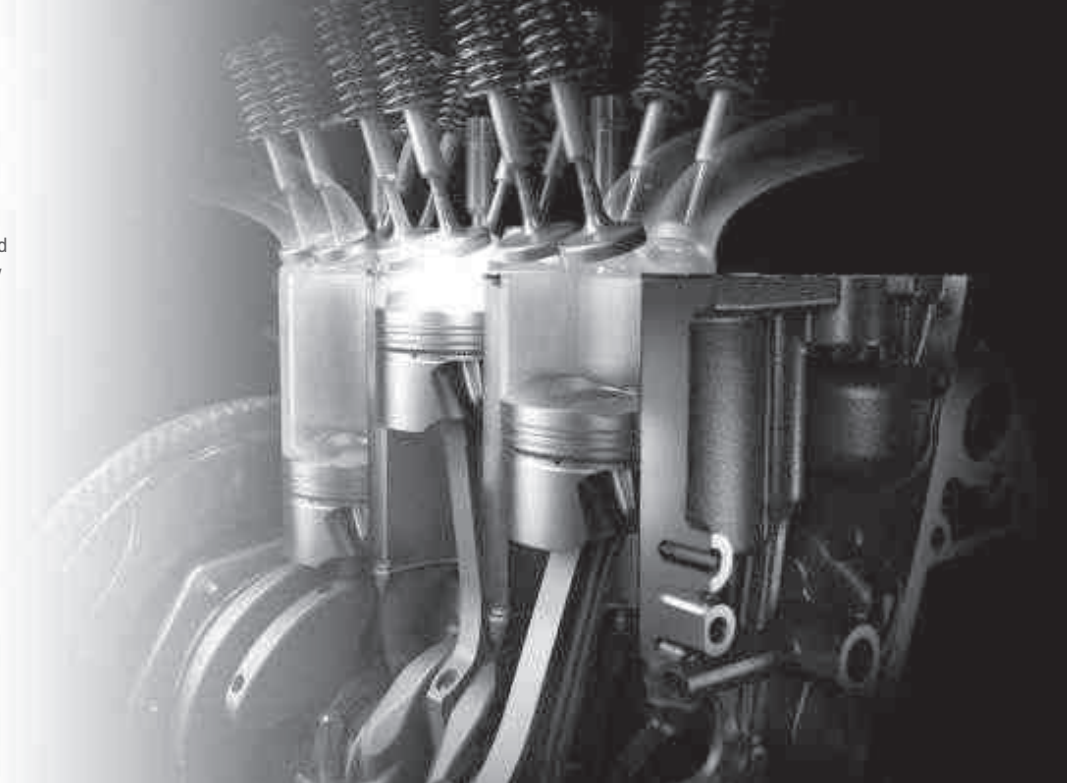
3m/3.4m load length with load-through bulkhead

The short wheelbase van can carry 3-metre long items, thanks to the flexible loadthrough bulkhead, whilst the L2 van is capable of taking 3.4-metre long items. (load-through bulkhead standard on Trend and Limited, option on Base)



EcoBoost petrol engine

Ford EcoBoost technology gives you the power of a big engine with the fuel economy and emissions of a small one. The latest ultra-efficient 1.0-litre EcoBoost engine produces an impressive 100 PS, yet it delivers a combined fuel consumption of 50.4 mpg and CO₂ emissions of only 129 g/km.



Engine data

Engine technical features

		Maximum power ^e	Maximum torque ^e
1.0 EcoBoost Stage VI	3 cylinders in line, DOHC, 12 valves, alloy cylinder head, direct injection with high-pressure, common rail fuel injection system, turbocharger with intercooler	100 PS (74 kW)	170 Nm
1.5 TDCi Diesel Stage VI	4 cylinders in line, SOHC, 8 valves, aluminium cylinder block with open deck, direct injection via solenoid injectors, common rail 3rd generation fuel injection system, fixed geometry turbocharger with intercooler	75 PS (55 kW)	190 Nm
1.5 TDCi Diesel Stage VI	4 cylinders in line, SOHC, 8 valves, aluminium cylinder block with open deck, direct injection via solenoid injectors, common rail 3rd generation fuel injection system, fixed geometry turbocharger with intercooler	100 PS (74 kW)	250 Nm
1.5 TDCi Diesel Stage VI	4 cylinders in line, SOHC, 8 valves, aluminium cylinder block with open deck, direct injection via solenoid injectors, common rail 3rd generation fuel injection system, fixed geometry turbocharger with intercooler	120 PS (88 kW)	270 Nm (300 Nm with auto)
1.6 TDCi Diesel Stage V	4 cylinders in line, SOHC, 8 valves, alloy cylinder head, direct injection with high-pressure, common rail 3rd multipoint fuel injection system, turbocharger with intercooler, electronic EGR	75 PS (55 kW)	220 Nm
1.6 TDCi Diesel Stage V	4 cylinders in line, SOHC, 8 valves, alloy cylinder head, direct injection with high-pressure, common rail 3rd multipoint fuel injection system, turbocharger with intercooler, electronic EGR	95 PS (70 kW)	230 Nm
1.6 TDCi Diesel Stage V	4 cylinders in line, SOHC, 8 valves, alloy cylinder head, direct injection with high-pressure, common rail 3rd multipoint fuel injection system, turbocharger with intercooler, electronic EGR	115 PS (85 kW)	270-285 Nm*

^eTested in accordance with ISO 1585. *With transient overboost. **Note:** all diesel engines are fitted with a standard vDPF (vapouriser Diesel Particulate Filter).

Mechanical features

	L1				L2			
	Base	ECONetic	Trend	Limited	Base	ECONetic	Trend	Limited
Brakes								
Power 4-wheel disc	●	●	●	●	●	●	●	●
Fuel								
Ford Easy-Fuel System	●	●	●	●	●	●	●	●
Fuel tank – 60 litres	●	●	●	●	●	●	●	●
Steering								
Electronic Power Assisted Steering (EPAS)	●	●	●	●	●	●	●	●
Suspension and body								
Twistbeam	●	●	●	●	●	●	●	●
Front: Independent MacPherson strut suspension, with stabilizer bar and coil spring	●	●	●	●	●	●	●	●
Rear: Semi-independent twist-beam, with dampers and coil spring	●	●	●	●	●	●	●	●
Starter Equipment (-25°C)	●	●	●	●	●	●	●	●

● = Standard L1 = Short wheelbase, L2 = Long wheelbase.

Ford Easy-Fuel capless refuelling system

A unique safeguard ensures nobody can accidentally fill up with the wrong fuel. Plus no dirty fuel caps to touch. (Standard)

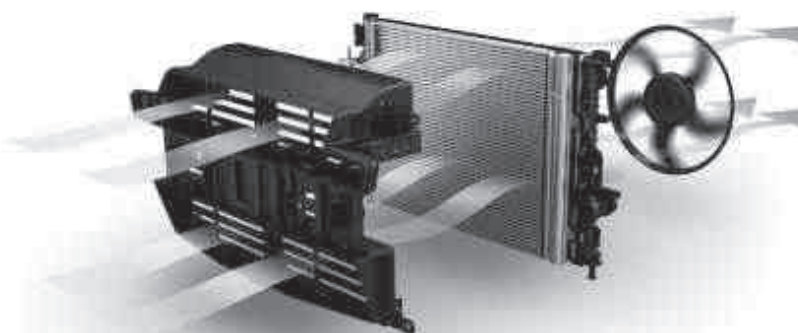


Safety, security and driver assistance

	L1				L2			
	Base	ECONetic	Trend	Limited	Base	ECONetic	Trend	Limited
Safety and driver assistance								
Active City Stop ¹⁾	○	–	○	○	○	–	○	○
Auto Start Stop ²⁾	□	●	□	–	□	●	□	–
Fuel Economy Pack (standard on 1.0T EcoBoost and 1.5TDCi 120PS, option on 1.6 TDCi 75PS & 95PS and 1.5TDCi 100PS, not available on 1.6TDCi 115PS)	○	●	○	–	○	●	○	–
Anti-lock braking system (ABS) with electronic brake-force distribution (EBD) and Electronic Stability Programme (ESP)	●	●	●	●	●	●	●	●
Emergency Brake Warning (flashing) ¹⁾	●	●	●	●	●	●	●	●
Emergency Brake Assist (EBA) ¹⁾	●	●	●	●	●	●	●	●
Hill Start Assist ²⁾	●	●	●	●	●	●	●	●
Lane Keeping Aid (Includes Blind Spot Information System, automatic headlights, speed sign recognition, rain sensitive wipers, heated windscreen, front fog lights and Active City stop) ²⁾	–	–	○	○	–	–	○	○
Traffic sign recognition ²⁾	–	–	□	□	–	–	□	□
Tyre Pressure Monitoring System ¹⁾ (Standard on Kombi)	○	○	○	○	○	○	○	○
Airbag – Driver's ¹⁾	●	●	●	●	●	●	●	●
Airbag – Front passenger's* with de-activation switch ¹⁾ (Standard on Kombi)	○	○	○	○	○	○	○	○
Airbags – Driver's and Passenger's side airbag (side and thorax) ¹⁾	□	□	□	□	□	□	□	□
Airbags – Driver's and Passenger's curtain airbag (head) ¹⁾	○	○	○	○	○	○	○	○
Trailer Sway Control (when a compatible towbar is fitted) ¹⁾	●	●	●	●	●	●	●	●
Cruise Control with Adjustable Speed Limiting Device ²⁾ (includes leather steering wheel)	○	○	○	●	○	○	○	●
Speed Limiter – 56 mph*	○	○	○	○	○	○	○	○
Speed Limiter – 62 mph*	○	○	○	○	○	○	○	○
Speed Limiter – 70 mph*	○	–	○	○	○	–	○	○
Switchable speed Limiter – 70 mph	–	●	–	–	–	●	–	–
Security								
Configurable locking – Config 1 (not available on Kombi)	○	○	○	○	○	○	○	○
Configurable locking – Config 2 (not available on Kombi)	○	○	○	○	○	○	○	○
Locking – auto relocking, doors relock after 45 seconds if no door is opened	●	●	●	●	●	●	●	●
Door auto relocking – 3/30 secs (n/a on Kombi Base)	○	○	○	○	○	○	○	○
Power door deadlocks	●	●	●	●	●	●	●	●
1 remote key + 1 plain key	●	●	●	–	●	●	●	–
2 remote keys (no plain key included as part of this pack)	○	○	○	●	○	○	○	●
Perimeter anti-theft Alarm	○	○	○	–	○	○	○	–
Thatcham Category 1 Alarm	○	○	○	●	○	○	○	●
Security – EPATS (Passive Anti-Theft System)	●	●	●	●	●	●	●	●

● = Standard, ○ = Option, at extra cost. □ = Part of optional pack, at extra cost. L1 = Short wheelbase, L2 = Long wheelbase. ¹⁾ Safety feature ²⁾ Driver assistance. * Speed limiters are not available on petrol models.

***Note: A rear-facing child seat should never be placed in the front passenger's seat when the Ford vehicle is equipped with a front passenger or side airbags.**



Active Grille Shutter

Designed to improve aerodynamics, speed up engine warm-up, and lower fuel consumption. (Standard on ECONetic and 1.0-litre EcoBoost, option as part of Fuel Economy Pack on 75PS and 95PS diesels)

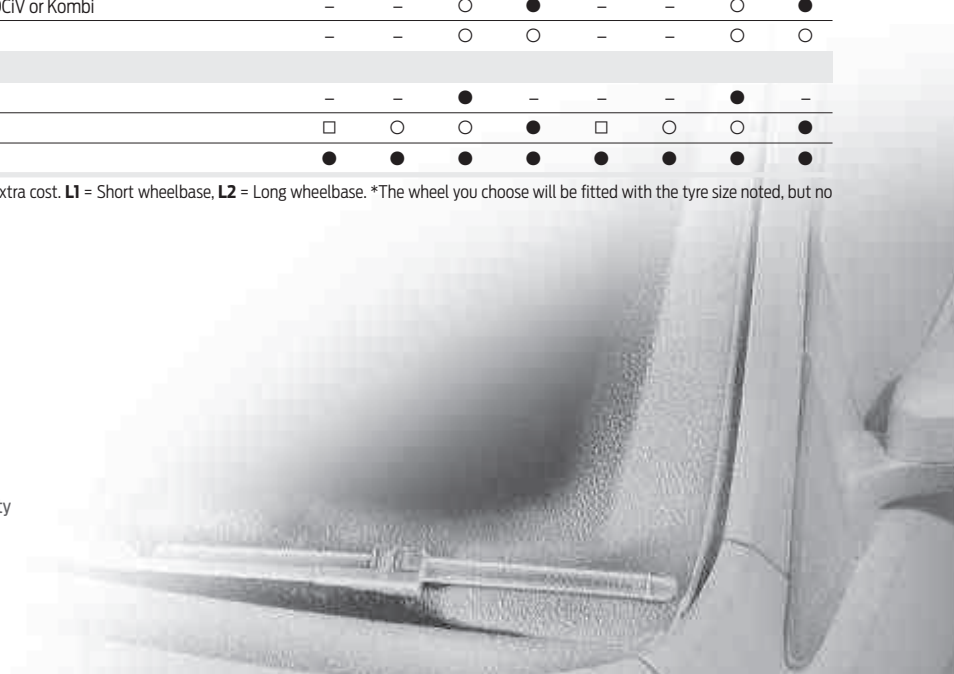
Exterior

	L1				L2			
	Base	ECOnetic	Trend	Limited	Base	ECOnetic	Trend	Limited
Exterior appearance and styling								
Front bumper – Self colour	●	●	-	-	●	●	-	-
Front bumper – Body colour	-	-	●	●	-	-	●	●
Rear bumper – Self colour	●	●	-	-	●	●	-	-
Rear bumper – Self-colour with body colour end-caps	-	-	●	●	-	-	●	●
Door handles (including tailgate) – Self colour	●	●	●	-	●	●	●	-
Door handles (including tailgate) – Body colour	-	-	-	●	-	-	-	●
Door mirrors – Manual, black housings with blind spot eliminator	●	●	-	-	●	●	-	-
Door mirrors – Electrically-operated and heated, self colour	○	○	●	-	○	○	●	-
Door mirrors – Electrically-operated, autofold and heated, self colour	-	-	○	-	-	-	○	-
Door mirrors – Electrically-operated, autofold and heated, body colour	-	-	-	●	-	-	-	●
Front grille – Self colour	●	●	●	-	●	●	●	-
Front grille – High gloss chrome grille splitter	-	-	-	●	-	-	-	●
Wide bodyside moulding – Self colour	●	●	●	-	●	●	●	-
Wide bodyside moulding – Body colour	-	-	-	●	-	-	-	●
Fog light bezels – Self colour	●	●	-	-	●	●	-	-
Fog light bezels – Body colour	-	-	●	●	-	-	●	●
Front lip spoiler (not available on petrol engines)	●	●	●	●	●	●	●	●
Active Grille Shutter (optional on 75 PS, 95 PS and 100 PS diesel, standard on 1.0 EcoBoost and 120 PS, n/a on 115 PS)	●/□	●	●/□	-	●/□	●	●/□	-
Mudflaps, front and rear	○	○	○	-	○	○	○	-
Exterior functional								
Doors – Dual side loading (standard on DCiV and Kombi)	○/●	-	○/●	○	○/●	-	○/●	○
Doors – Kerbside load door (standard on Vans)	●	●	●	●	●	●	●	●
Doors – Rear liftgate (n/a on DCiV)	○	-	○	-	○	-	○	-
Doors – Rear cargo doors hinged	●	●	●	●	●	●	●	●
Front and rear towing hooks	●	●	●	●	●	●	●	●
Tow bar – fixed (includes 13 pin E-kit and Trailer Sway Control (TSC))	○	-	○	○	○	-	○	○
Tow bar – detachable (includes 13 pin E-kit and Trailer Sway Control (TSC))	○	-	○	○	○	-	○	○
Parking distance sensors – Rear	○	○	○	●	○	○	○	●
Parking distance sensors – front & rear (n/a on Kombi & DCiV Base)	○	○	○	○	○	○	○	○
2-speed variable intermittent front wipers	●	●	●	-	●	●	●	-
Rain sensitive wipers (with Automatic headlights; only in combination with Heated Front Screen)	□	-	□	●	□	-	□	●
Rear window washer/wiper (standard on Kombi)	○	-	○	-	○	-	○	-
Fixed rear window (standard on Kombi)	○	-	○	-	○	-	○	-
Fixed 2nd row windows (DCiV only - standard on Kombi)	○	-	○	-	○	-	○	-
Sliding 2nd row side windows (available on Kombi only)	-	-	-	-	○	-	-	-
Heated rear window (standard Kombi, Optional Van/DCiV)	○	-	○	-	●/○	-	○	-
Heated windscreen	○	○	●	●	○	○	●	●
Rear ladder	○	-	○	-	○	-	○	-
Roof rails (n/a on DCiV L2)	○	○	○	○	○	○	○	○
Roof rails plus crossbars (L1 DCiV and Kombi only)	○	-	○	-	○	-	○	-
Spare wheel (standard on Van, excluding ECOnetic, optional DCiV/Kombi)	○/●	-	○/●	●	○/●	-	○/●	●
Tyre inflator Kit (standard on DCiV/Kombi/ECOnetic, optional Van)	●/○	●	●/○	●/○	●/○	●	●/○	●/○
Steel – 16"x 6½", Base wheel covers (fitted with 205/60 tyres)*	●	●	○	-	●	●	○	-
Steel – 16"x 6½", Trend wheel covers (fitted with 205/60 tyres)*	-	-	●	-	-	-	●	-
Alloy – 16"x6½" 5-spoke (fitted with 205/60 tyres)* Not available on DCiV or Kombi	-	-	○	●	-	-	○	●
Alloy 16"x6½" 5-spoke (fitted with 205/60 tyres)	-	-	○	○	-	-	○	○
Exterior lighting								
Fog lights – Front	-	-	●	-	-	-	●	-
Fog lights – with Static cornering lamps	□	○	○	●	□	○	○	●
Fog lights – Rear	●	●	●	●	●	●	●	●

● = Standard, ○ = Option, at extra cost, □ = Part of an option pack, at extra cost. L1 = Short wheelbase, L2 = Long wheelbase. *The wheel you choose will be fitted with the tyre size noted, but no choice of tyre brand is available.

Quickclear heated windscreen

Designed to demist the screen in seconds, even on frosty mornings. (Standard on Trend and Limited)



Exterior

	L1				L2			
	Base	ECOnetic	Trend	Limited	Base	ECOnetic	Trend	Limited
Exterior appearance and styling								
Halogen headlights, side lights, rear fog light, reversing light	●	●	●	●	●	●	●	●
Automatic headlights (with Rain sensitive wipers; only in combination with Heated Front Screen)	□	-	○	●	□	-	○	●
Headlights – Courtesy delay	□	-	○	●	□	-	○	●
Daytime running lights	●	●	●	●	●	●	●	●
High-mounted rear brake light	●	●	●	●	●	●	●	●
Option Packs								
Comfort Pack (air conditioning, cruise control with Adjustable Speed Limiting Device)	○	○	○	-	○	○	○	-
City Pack (Active City Stop, auto headlamps and wipers, trip computer, reverse parking aid, Quickclear heated front screen, dual power heated mirrors, and static cornering front foglamps) requires SYNC	□	-	-	-	□	-	-	-
City Safety Pack (Active City Stop, plus auto headlamps on Trend)	-	-	○	○	-	-	○	○
Functional Pack (air conditioning, cruise control with Adjustable Speed Limiting Device, bulkhead with load-through hatch and window) (only available with dual passenger seat, not available DCiV, Kombi)	□	-	-	-	□	-	-	-
Visibility Pack (Static cornering foglamps, auto headlamps, rain sensitive wipers, Quickclear heated front screen, power/heated mirrors, requires SYNC	□	-	-	-	□	-	-	-

● = Standard, ○ = Option, at extra cost, □ = Part of an option pack, at extra cost. L1 = Short wheelbase, L2 = Long wheelbase. *The wheel you choose will be fitted with the tyre size noted, but no choice of tyre brand is available.

Interior

	L1				L2			
	Base	ECOnetic	Trend	Limited	Base	ECOnetic	Trend	Limited
Audio and communication systems								
Radio with DAB, 2 speakers and MP3 capability, Bluetooth® and remote audio controls (ICE Pack 2)	●	●	-	-	●	●	-	-
Radio/CD with DAB, 3.5" dot-matrix display, including message centre, 4 speakers and MP3 capability and Ford SYNC (includes Emergency Assistance**, Bluetooth® and Voice Control and audible text messaging, USB and Privacy mode) and remote audio controls (ICE Pack 4)	○	○	●	●	○	○	●	●
Radio/CD/Navigation system with DAB, 6" colour screen, SYNC 2, Rear View Camera, 4 speakers and MP3 capability (includes Emergency Assistance**, Bluetooth® and Voice Control and audible text messaging, USB and Privacy mode) remote audio controls (ICE Pack 7)	-	-	○	○	-	-	○	○
Carpet and trim								
Door handle – Black	●	●	●	-	●	●	●	-
Door handle – Chrome finish (standard on DCiV Trend)	-	-	-	●	-	-	-	●
Gearshift knob – Urethane	●	●	●	●	●	●	●	●
Floor covering – Front, rubber (optional on Kombi)	●	●	●	●	●/○	●	●	●
Carpet 1st and 2nd row (Kombi only)	-	-	-	-	●	-	-	-
Interior lighting								
Courtesy lights – header	●	●	-	-	●	●	-	-
Courtesy lights – front dome light with 2 map lights	-	-	●	●	-	-	●	●
Courtesy lights – rear dome light (DCiV/Kombi)	●	-	●	-	●	-	●	-
Load compartment light – standard (not available DCiV/Kombi)	●	●	●	-	●	●	●	-
Load compartment light – LED high power (not available DCiV/Kombi)	○	○	○	●	○	○	○	●
Light – Glovebox	-	-	-	●	-	-	-	●
Instruments and controls								
Steering wheel – 4-spoke PU	●	-	-	-	●	-	-	-
Steering column – Rake and Reach adjustable	●	●	●	●	●	●	●	●
Steering wheel – 4-spoke PU with black shells (optional on DCiV and Kombi Base)	□	●	-	-	□	●	-	-
Steering wheel – 4-spoke with aluminium shells	□	□	□	-	□	□	□	-
Steering wheel – 4-spoke leather-wrapped	□	□	□	●	□	□	□	●
Trip/fuel computer with remote steering wheel control	●	●	●	●	●	●	●	●
Eco mode (driver information system)	-	●	●	●	-	●	●	●
12 V Powerpoint in instrument panel	●	●	●	●	●	●	●	●
12 V Powerpoint in console (2 in Kombi)	●	●	●	●	●	●	●	●
12 V Powerpoint rear	-	-	●	●	-	-	●	●
Instrument panel storage box	●	●	●	●	●	●	●	●
Seats and seat belts								
Driver 4-way manual seat adjuster (fore/aft+recline)	●	●	-	-	●	●	-	-
Driver 8-way manual seat adjuster (fore/atf, up/down+recline- excludes Kombi MI)	○	○	●	●	○	○	●	●
Passenger 4-way manual seat adjuster (fore/aft+recline)	●	●	-	-	●	●	-	-
Individual passenger seat 2-across seating	●	●	-	-	●	●	-	-
Dual passenger seat (with load-through functionality - Van only)	○	-	●	●	○	-	●	●
Driver belt minder	●	●	●	●	●	●	●	●
Driver heated seat	-	-	-	●	-	-	-	●
Driver lumbar seat support	-	-	●	●	-	-	●	●
Seat belts – Front, 3 point, with seat pre-tensioner, height adjust and load limiters	●	●	●	●	●	●	●	●

● = Standard, ○ = Option, at extra cost, □ = Part of an option pack, at extra cost. L1 = Short wheelbase, L2 = Long wheelbase. ** Ford Emergency Assistance operates in over 40 European Countries and regions. This feature works when paired with a compatible mobile phone that is with you when any airbag is deployed (excludes knee airbags and rear inflatable safety belts, if equipped) or the fuel pump shut off switch is activated. See Ford.co.uk for latest information.

	L1				L2			
	Base	ECOnetic	Trend	Limited	Base	ECOnetic	Trend	Limited
Comfort and convenience								
Rear-view mirror – Screen mounted interior	●	-	●	-	●	-	●	-
Rear-view mirror – Auto-dimming	□	●	□	●	□	-	□	●
Dual front cup holders	●	●	●	●	●	●	●	●
Rear-view camera with mirror display	○	○	○	○	○	○	○	○
Locking glovebox lid (illuminated glovebox in Limited)	-	-	●	●	-	-	●	●
Centre console (Standard on DCIV/Kombi)	●	●	-	-	●	●	-	-
Centre console (with dual passenger seat)	□	-	●	●	□	-	●	●
Overhead storage, front	●	●	●	●	●	●	●	●
Windows – Electrically-operated front with driver one-touch lowering	●	●	●	-	●	●	●	-
Air conditioning – Manual control (not available with 1.0 EcoBoost engine)	○	○	○	-	○	○	○	-
Air conditioning – Manual control with smart recirc function (only available with 1.0 EcoBoost engine)	-	-	○	-	-	-	-	-
Air conditioning – Dual Zone Electronic Automatic Temperature Control (DEATC) with electronic recirculation facility	-	-	-	●	-	-	-	●
Smoker's Pack – Cigarette lighter and ashcup	○	○	○	○	○	○	○	○
Interior grab handles Front	●	●	●	●	●	●	●	●
Rear coat hooks (DCIV/Kombi only)	●	-	●	-	●	-	●	-
Loadspace compartment								
Cargo side wall tie down hooks (6 Van, 4 Kombi)	●	●	●	●	●	●	●	●
Complete rear trim board (not available DCIV/Kombi)	□	□	●	●	□	□	●	●
Load floor liner (not available DCIV/Kombi, L1 only on ECOnetic Van)	○	○	●	●	○	○	●	●
Bulkhead – Moveable full width, full-height mesh (DCIV only)	●	-	●	-	●	-	●	-
Bulkhead – Full width steel (Van only)	●	●	-	-	●	●	-	-
Bulkhead – Full width steel – fixed window (Van only)	○	○	-	-	○	○	-	-
Bulkhead – Full width steel – with loadthrough hatch (with dual passenger seat; Van only)	○	-	●	●	○	-	●	●
Bulkhead – Full width steel – with loadthrough hatch and fixed window (with dual passenger seat; Van only)	○	-	○	-	○	-	○	-
Rear window protection grille (with Cargo doors only)	○	-	○	-	○	-	○	-
Cargo Retention Net (Vertical) - Kombi only	-	-	-	-	●	-	-	-

● = Standard, ○ = Option, at extra cost. □ = Part of an option pack, at extra cost. L1 = Short wheelbase, L2 = Long wheelbase. ** Ford Emergency Assistance operates in over 40 European Countries and regions. This feature works when paired with a compatible mobile phone that is with you when any airbag is deployed (excludes knee airbags and rear inflatable safety belts, if equipped) or the fuel pump shut off switch is activated. See Ford.co.uk for latest information.

Flexible dual front passenger seat

The dual passenger seat allows you to fit up to three in the cab. The centre seat folds down to provide a writing surface, and also flips up to reveal a storage box. The fold flat outer seat enables long items to be loaded into the passenger footwell and under the instrument panel. It is also able to fold backwards (cinema style) to allow tall loads and boxes to be carried in the front passenger space. (Standard on Trend and Limited)



Make it yours

Choosing the colour and trim for your new Ford Transit Connect is an opportunity to make a bold style statement.



Frozen White
Solid body colour



Blazer Blue
Solid body colour



Shadow Black
Mica body colour*



Moondust Silver
Metallic body colour*



Tectonic Silver
Metallic body colour*



Race Red
Solid body colour



Magnetic
Metallic body colour*



Deep Impact Blue
Metallic body colour*

Note The images used are to illustrate body colours only and may not reflect the vehicle described. Colours and trims reproduced within this brochure may vary from the actual colours, due to the limitations of the printing processes used.

*Metallic and mica body colours are options, at extra cost.

12-year perforation warranty

The new Transit Connect owes its durable exterior to a thorough multi-stage painting process. From the wax-injected steel body sections to the environmentally friendly water-based top coat, Transit Connect will retain its good looks for many years to come.

Making life easy

Our range of finance, service and assistance options is designed with just one thing in mind – making life easy for you.

Ford Transit24

At Ford we recognise the importance of minimising downtime, inconvenience and expense – that's why we provide first-class aftersales support.

When it comes to the service, maintenance and repair of your Ford commercial vehicles, look no further than your nearest Transit Centre. Dedicated to looking after your vehicle, Transit Centres offer specialised workshop equipment, tools and training, and can look after all your service, maintenance and warranty work.

Convenient servicing

While-you-wait servicing Your commercial vehicle can be serviced when it suits you. Late night service appointments are available at least once a week and we respond to 1link online service booking requests within twenty minutes.

Collection and delivery This can be arranged at the time of your service booking for locations within a reasonable travelling time. So that it looks its best, your vehicle will be washed.

Fleet National Pricing Maximum recommended pricing for fleets with over 25 vehicles ensures you get the best price for routine services and fixed-content job.

MOTs and more Transit Centres can handle MOTs (including Class 5 and 7 tests), tachograph servicing and speed limiting (VOSA approved).

Other benefits

Ford parts availability Ford will endeavour to ensure any parts required will either be in stock or delivered anywhere on the UK mainland by 9am the next morning.

Genuine Ford parts quality All parts are designed and engineered by Ford, to Ford standards. Parts fitted to a vehicle outside of warranty carry a 'fitted in service' parts warranty.

Ford diagnostics For speedy and accurate fault diagnosis, we provide a sophisticated, internet-linked vehicle diagnostics system.

Ford trained technicians Ford commercial vehicle dealers have Ford-trained technicians, supported by online technical information and a Ford technical hotline.

Unscheduled repairs When your commercial vehicles aren't working, neither are your drivers. Our priority is to get your vehicle back on the road as quickly and as efficiently as possible.

Priority treatment for urgent repairs Initial diagnosis on urgent (vehicle off-road) repairs is carried out on arrival, with parts ordered within two hours of arrival – especially helpful when a replacement vehicle won't do. We aim to complete most repairs the same working day.

Dedicated backup from Ford

Ford Fleet Electronic Recall Programme This simplifies the process of recalls and improves communications with the operators of affected vehicles.

Ford Fleet Service Centre A dedicated team of experienced service advisors to assist with your aftersales issues.

Ford Fleet Accident Management Whatever the make of the vehicle, we offer a free, ethical and comprehensive accident management programme.

Efficiency, accuracy and convenience are at the heart of the Ford Transit24 commercial vehicle service promise. So, whether it's servicing, maintenance or repair you need, be sure to come and see us.

For more information and to find your nearest Transit Service Dealer, visit the aftersales support section at www.ford.co.uk/fordfleet

Commercial Vehicle Finance

When it comes to financing your Ford Commercial Vehicle, our size and expertise means we're well placed to provide you with a wide range of finance products.

Ford Credit*: Provides a range of finance plans for Commercial Vehicle customers interested in owning their vehicle.

Ford Lease^: Specialises in contract hire and leasing and provides an alternative range of finance plans which can be tailored to suit your business. Business users only.

Important Information:

*Ford Credit: Finance subject to status. Guarantees may be required. Freepost Ford Credit.

Ford Credit is a trading style of FCE Bank plc, which is authorised by the Prudential Regulation Authority and regulated by the Financial Conduct Authority and Prudential Regulation Authority under firm reference number 204469.

^Ford Lease: Ford Lease is provided by ALD Automotive Ltd, trading as Ford Lease, Oakwood Park, Lodge Causeway, Fishponds, Bristol, BS16 3JA. ALD Automotive is registered in England No. 987418. For the purposes of the Data Protection Act 1998 the data controllers in relation to any information you supply are Ford Motor Company Limited, FCE Bank Plc and ALD Automotive. Finance subject to status. Guarantees and indemnities may be required. ALD Automotive is authorised and regulated by the Financial Conduct Authority.

Services

To find the location of your nearest Transit Centre simply visit the Ford Dealer locator at www.fordvans.co.uk

Ford Warranty Every new Ford Fiesta Van and Ford Ranger is protected by a 3-year/ 60,000 mile* warranty^o.

Ford Transit, Transit/Tourneo Custom, Transit/Tourneo Connect and Transit Courier are protected by a 3-year/100,000 mile warranty^o.

Ford Transit Chassis Cab One-Stop bodywork is covered by a 3-year/ 100,000 mile warranty^o and a 3-year Perforation Warranty provided by the bodywork supplier.

Ford Perforation Warranty Ford Ranger, Transit, Transit/Tourneo Custom, Transit/Tourneo Connect, Transit Courier and Fiesta Van are covered by the Ford Perforation Warranty^o for 12 years from the date of first registration. Please see your Ford Transit Specialist Dealer for details.

Ford Assistance Ford Transit, Transit Custom, Transit Connect and Ranger are supplied with a minimum of a 1-year Ford Assistance roadside package. Further details are available either on www.ford.co.uk or from your local Ford Dealer.

Ford Accident Repair Centres Approved Ford Accident Repair Centres meet rigorous Ford standards and are the best place to return your vehicle to its pre-accident condition.

Contacts

Ford Customer Relationship Centre In the unlikely event that your Ford Dealer can't help you or if you need to speak to us directly, call 0203 564 4444 at local rates.

Ford Rental – local service nationwide Car and Van rental from our latest model range. Contact your local Ford Dealer for more information.

Ford Motability Call our Ford Motability team on 0345 6040019

* year 1 - unlimited mileage

^o Subject to terms and conditions



MY 2015.75 GBR en

Illustrations, descriptions and specifications. This catalogue was correct at the time of going to print. However, Ford policy is one of continuous product development. The right is reserved to change specifications, colours and prices of the models and items illustrated and described in this publication at any time. For the latest details always consult your Ford Dealer. **Optional equipment.** Throughout this publication, wherever a feature is described as being an 'Option' or 'Option Fitment/Pack' etc, you should assume that it will be at extra cost to the base vehicle, unless specifically stated to the contrary. All models and colour combinations are subject to availability. **Note.** Some images portrayed are of a pre-production model and/or are computer generated, therefore, the design/features on the final version of the vehicle may differ in various respects. In addition, some of the features shown on the vehicles may be optional. **Note.** This brochure contains both original Ford accessories as well as a range of products from our suppliers. **+**The identified accessories are carefully selected third party supplier branded accessories which do not come with a Ford warranty but are covered by the third party supplier's own warranty, the details of which can be obtained from your Ford Dealer. **Note.** The Bluetooth® word mark and logos are owned by the Bluetooth SIG, Inc. and any use of such marks by Ford Motor Company is under licence. The iPod word mark and logos are the property of Apple Inc. Other trademarks and trade names are those of their respective owners. **Note.** Some driver assistance features and safety features described in this brochure are designed to function using sensors, whose performance may be affected under certain weather or environmental conditions.

The Government fuel figures do not express or imply any guarantee of the fuel consumption of any particular vehicle. The vehicles themselves have not been tested and there are inevitably differences between individual vehicles of the same model. In addition, a vehicle may incorporate particular modifications. Furthermore, the driver's style and road and traffic conditions, as well as the extent to which the vehicle has been driven and the standard of maintenance, will affect its fuel consumption. **Insurance groups** are only as recommended by the Association of British Insurers. You should always consult your insurance adviser for confirmation.



Ford and BP – working together to reduce fuel consumption and emissions.



International Engine of the Year
Ford 1.0 litre EcoBoost



International Engine of the Year
Ford 1.0 litre EcoBoost



Ford One Call

In the unlikely event that your Ford Dealer can't help you or if you need to speak to us directly, call 0203 564 4444

Ford Rental - local service nationwide

Car and Van rental from our latest model range. Contact your local Ford Dealer for more information

Ford Motability

Call our Ford Motability team on 0345 6040019

Finance

Ford Credit Customer Services 0845 712 5490
Ford Lease Customer Services 0844 600 1405

Published by Ford Motor Company Limited, Brentwood, Essex, England. Registered in England No. 235446.

FA 1590/2
BJN 204188. FoE H60E.
PN 577503/1015/12m/GBR en
June 2015

© Ford Motor Company Limited.

www.ford.co.uk